

A smiling couple, a man and a woman, are shown in profile, looking towards the right. They are outdoors, with green foliage in the background. The man is wearing a blue and white plaid shirt, and the woman is wearing a white top. The overall mood is warm and positive.

AVATEA

GREEN

Putting community back into living.

Fletcher Living

Welcome to Awatea Green... a new neighbourhood that's big enough to give you space, yet small enough to make friends for life.

Whether you're just starting out, a growing family or enjoying that empty nest, Awatea Green will welcome you with its combination of contemporary homes that match our modern kiwi lifestyle.

Situated just off Christchurch's Southern Motorway and only 10 minutes from the CBD, Awatea Green offers a unique lifestyle location.

Good schools, close proximity to shopping centres, The Landing at Wigram Skies, eateries and entertainment, and only a short drive to AMI Stadium and Horncastle arena.

Awatea Green blends shared open spaces, a playground, walkways, a cycleway to the city and views of the Port Hills and Southern Alps.

Lifestyle

With a masterplan that has been shaped to combine a real sense of community, Awatea Green incorporates a thoughtful mix of housing options to attract a wide variety of new homeowners.

Shared green spaces, a playground to encourage new friendships, meandering pathways and cycleways to get out and about. Whether you're walking the dog, pushing a stroller or jogging off the stress of the day, Awatea Green makes it all possible. There's space to get to know your neighbours – share a bbq or play a game of backyard cricket. Connections to neighbouring communities couldn't be easier with local schools, shopping, cafes and restaurants just minutes away.



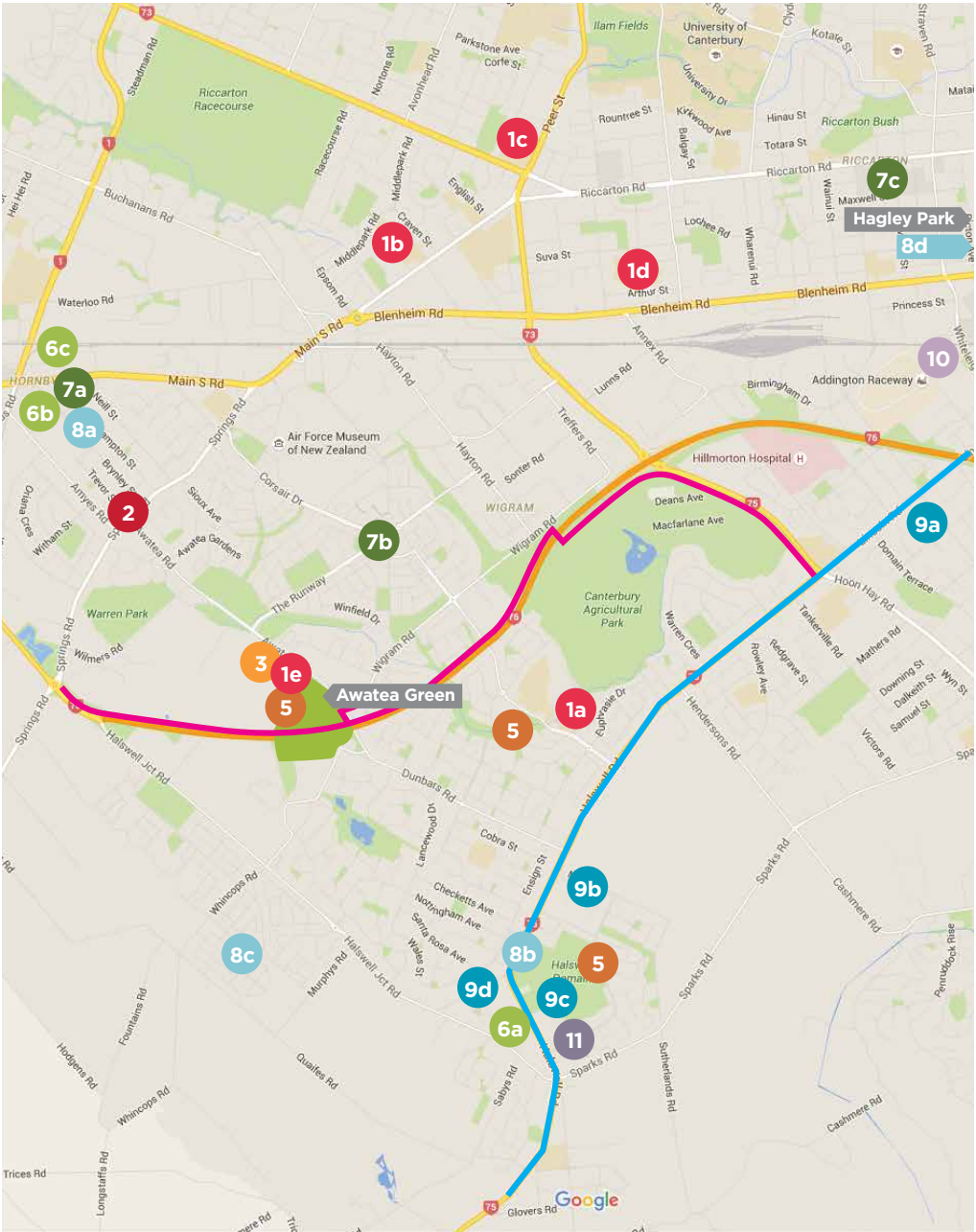
Location

Situated off Awatea Road and surrounded by the communities of Aidanfield, Halswell, Wigram and Hornby South; Awatea Green is perfectly positioned for lifestyle and convenience. The Landing at Wigram Skies, Lincoln Road eateries, malls and shops are handy to get to.

Great local schools include Aidanfield Christian School, St Thomas of Canterbury, Villa Maria College, Middleton Grange School and Wigram Primary opening in 2019. To view other schools in the area visit nzschoools.tki.org.nz.

If work takes you to the city, it's a 10 minute commute and for jet setting, the airport is a relaxed 15 minute drive.

Start a new life,
make new friends.
Build a community.



- 1 LOCAL SCHOOLS**
 - a. Aidanfield Christian School
 - b. St Thomas of Canterbury
 - c. Villa Maria College
 - d. Middleton Grange School
 - e. Nurtury Pre School
- 2 TRANSPORT to CBD: bus route 80 stopping at;**
Canterbury University, Westfield Riccarton Mall, Hagley Park and CBD Bus Interchange
- 3 TRANSPORT to Airport: Bus Route 125**
- 4 MAJOR CYCLEWAY**
 - Off-road cycleway indicated by pink line
 - On-road cycleway indicated by blue line
- 5 PLAYGROUND IN THE DEVELOPMENT AND OTHERS NEARBY**
- 6 SUPERMARKETS**
 - a. New World
 - b. Countdown
 - c. Pak'n Save
- 7 SHOPPING**
 - a. Dressmart Hornby and the Hub Hornby Mall
 - b. The Landing
 - c. Westfield Riccarton
- 8 MEDICAL CENTRE'S**
 - a. Hornby
 - b. Halswell
 - c. Longhurst
 - d. Christchurch Hospital
- 9 LOCAL EATERIES**
 - a. Lincoln Road - e.g. Pedal Pusher, Domino's, The Miller Cafe and Bar, Sullivans Irish Bar
 - b. Halswell Road - White House Black Restaurant
 - c. The Old Vicarage Cafe Restaurant and Bar
 - d. Craythorne's Public House
- 10 HORNCASTLE ARENA & AMI STADIUM**
- 11 TE HAPUA/HALSWELL COMMUNITY CENTRE, LIBRARY AND SUMMER AQUATIC CENTRE**

Stand alone homes. Stand out designs.

Architecturally designed, one and two level homes which blend versatility of space and superb indoor-outdoor flow.

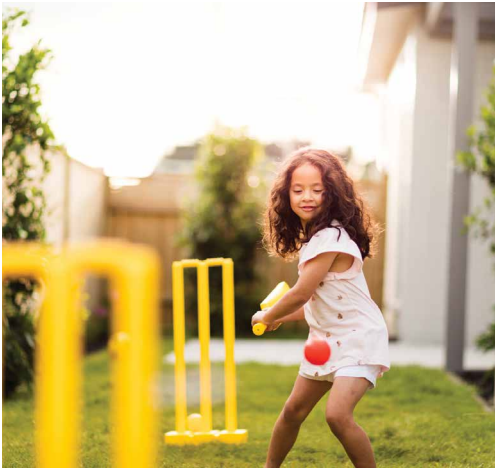
With a mix of designs and floor layouts, these quality finished 2 & 3 bedroom homes accurately reflect the latest in kiwi living.

Light-filled living spaces, on trend kitchen and bathrooms, and open plan designs enable effortless flow throughout the home.

The kitchens are made for entertaining with high-quality fixtures and trusted New Zealand appliances.

Generously sized bedrooms include built-in wardrobes and offer the abundance of space families require.

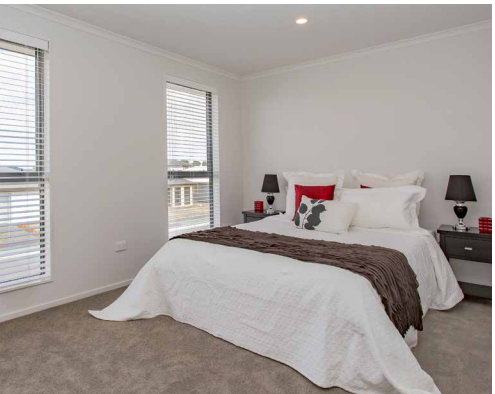
These homes incorporate a thoughtful blend of flooring options. Neutral colour tones have been selected to give buyers plenty of scope to add their personal style to the interior design with the addition of their own soft furnishings and furniture.



Design

- CONTEMPORARY OPEN PLAN DESIGNS
- 2 & 3 BEDROOM HOMES
- DESIGNER KITCHENS WITH FISHER & PAYKEL APPLIANCES
- LATEST EXTERIOR CLADDING TRENDS
- FENCED & LANDSCAPED SECTIONS
- 10 YEAR MASTER BUILD GUARANTEE
- SINGLE & DOUBLE GARAGE OPTIONS

Versatile space, light filled, warm, clean, contemporary designs.



Affordable homes

Make your first step on the housing ladder at Awatea Green.

Fletcher Living believes in making home ownership accessible to everyone. Architecturally designed, affordable 2 & 3* bedroom homes feature throughout the Awatea Green development. These are only be available to first home buyers who have qualified for a Welcome Home Loan. Talk to your lending provider today to see if you're eligible, then take a walk through one of our display homes and fall in love with what could be your new home!

* A limited number of 3 bedroom homes will be available.



Terrace homes. Make living easy.

Busy lives leave little time for gardening or mowing the lawns. Move into an architecturally designed terrace home at Awatea Green and make the most of those short weekends.

Awatea Green's terrace homes offer the best in comfort and style, with the ease of a lock and leave.

These spacious 3 bedroom terrace homes incorporate high quality, durable construction with space that maximises light and warmth.

Internal courtyards between secure garaging and the terrace provides additional outdoor space to enjoy.

Multi-floor living and open plan design enables effortless flow throughout the terrace. The living spaces are bright and airy, kitchen and bathrooms finished in the latest styles and like our stand alone homes, feature high-quality fixtures and trusted New Zealand appliances.

Bedroom sizes are spacious with built-in wardrobes. Quality flooring options throughout the terraces are in neutral tones to allow buyers to easily add their personal touch to the interior design.



“Fonzie” Flats. Endless Possibilities.

“Fonzie” flats are unique to a number of terrace homes and feature a fully self-contained one bedroom studio. A private space for a growing teenager, a granny flat, an additional family room or even a home office. The versatility is yours.

We have a trusted reputation for designing and building high quality, low maintenance homes.



Design

KITCHEN

- CONTEMPORARY OPEN PLAN DESIGNS
- 3 BEDROOM, TWO LEVEL TERRACES
- “FONZIE” FLAT OPTION
- DESIGNER KITCHENS WITH FISHER & PAYKEL APPLIANCES
- LATEST EXTERIOR CLADDING TRENDS
- FENCED & LANDSCAPED SECTIONS
- 10 YEAR MASTER BUILD GUARANTEE
- SINGLE & DOUBLE GARAGE OPTIONS



View today, move in tomorrow

Visit our website for more information including details on our showhomes.

**For all enquiries:
Paula Quayle
Sales Manager**

pquayle@frl.co.nz
Mobile: 027 809 8553

The Fletcher Living advantage

Finished homes you can walk through.

Buying off plan is often confusing and can put your imagination to the test. That's why Fletcher Living sell finished homes. Walk through and get a real feel for the quality, the finish and the style of what could be your new home. Come and talk with our experienced sales team at one of our Showhomes today.

Experience you can trust.

As residential building specialists, Fletcher Living brings over a 100 years of building experience to every home we build. We use best-in-class architects, landscape designers and interior specialists to ensure our homes are designed to meet your needs today and into the future. Our contemporary designs maximise light, space and warmth ensuring our homes are sustainable, energy efficient and long lasting. We choose materials that are proven, work in harmony with the land and come from local and sustainable resources. All backed by a Master Build 10 Year Guarantee.

A moving in experience.

Moving into a new home is an emotional experience and we make every effort to ensure it's a happy one. On handover we'll walk you through all the features of your new home to ensure you're happy. We'll provide a welcome pack filled with everything you need to settle seamlessly into your new home; a homecare manual, manufacture warranties, even how to use the dishwasher.

No need for progress payments.

We sell 'completed' homes so there's a deposit on purchase, with a balance on settlement – one of the simplest ways to buy a brand new home. With completed home and land packages at Awatea Green starting from \$350,000 you'll want to be the first to view!

fletcherliving.co.nz

Fletcher Living