

Greenstead

Lincoln



Fletcher Living®
this is living



Our Development Overview

Growing for you

Greenstead brings the benefits of easy living right to your doorstep.

With its serene green pastures nearby and easy access to the vibrant Christchurch City Centre, this location offers the ideal blend of tranquility and convenience. Imagine calling this place home, where you can enjoy spacious reserves, inviting walks, and a warm, welcoming community. Lincoln boasts excellent facilities and all the amenities you could wish for, making it perfect for settling down or investing in your future.

Don't miss out on this opportunity to embrace a relaxed lifestyle in a well-positioned development.

Highlights

The surrounding open space and history of Lincoln is what draws many families to the area. There's a great community established here already. Lincoln township has everything you need with excellent primary and secondary schools, parks and golf club, plus the essentials like a supermarket, library, cafes and bars.

You'll appreciate the space in Greenstead, too. With wide streets, playground and pathways weaving through the new development.

Designed by local KRUSH Architecture, we have 2, 3 and 4 bedroom homes on offer and you'll see a mix of families enjoying the best of modern living in this brand new community.

Some homes also include an ultra low emission log burner for extra ambience and warmth in your new home.

Features

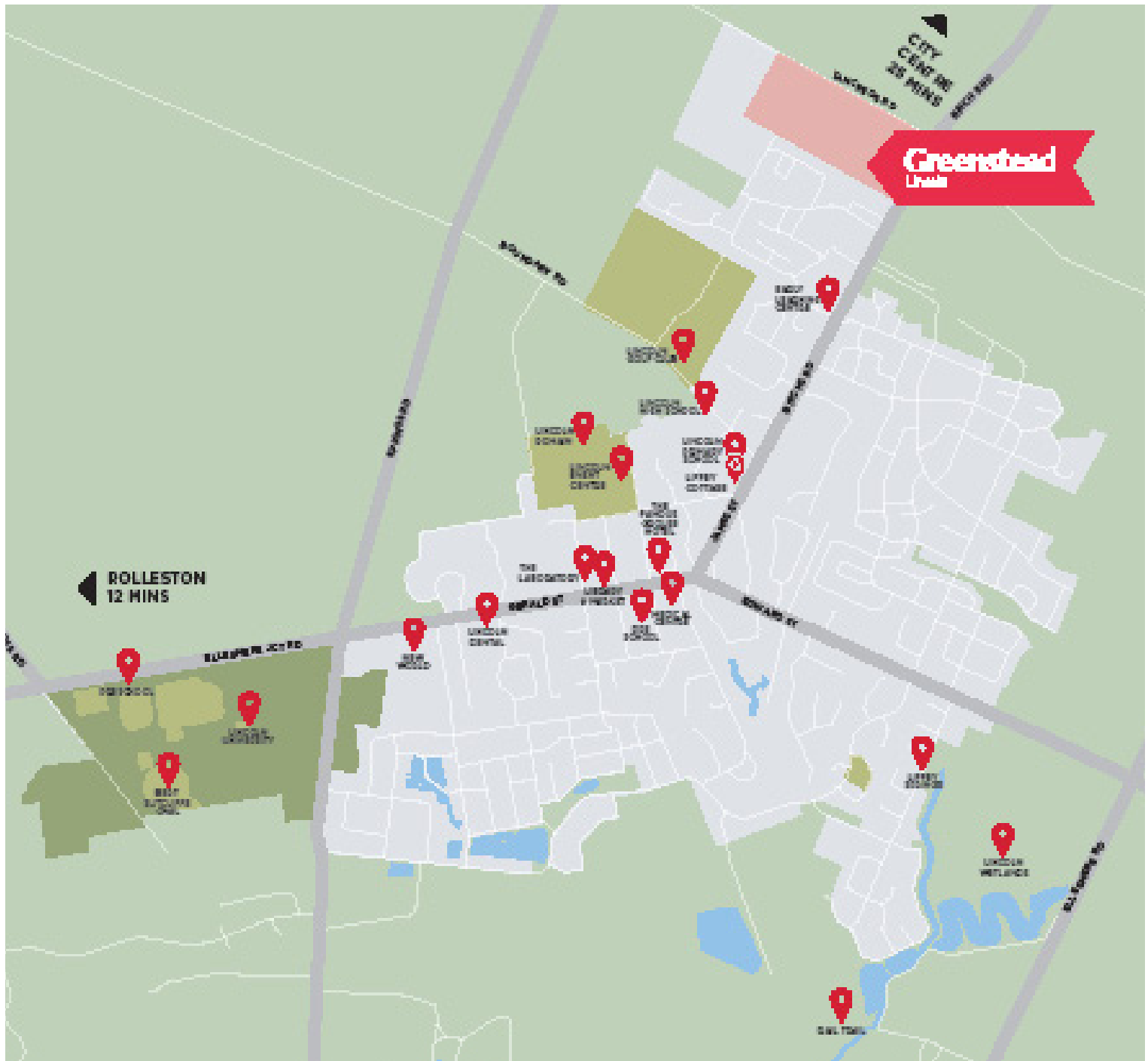
Fully completed homes mean you can walk through and get a feel for what living in one of our brand new homes feels like.

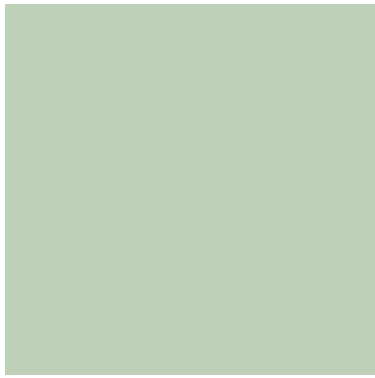
As you'd expect from Fletcher Living, each home is built to the new Healthy Home Standards – so they are warm, dry and comfortable. Plus, each home has its own unique touches. With widely varied exterior designs and interior layouts using an extensive range of high-quality materials and landscaping to create a sense of individuality.

These exteriors make for easy maintenance too, leaving you more time to enjoy your new neighbourhood.

- Healthy homes that are warm and dry
- Wide range of exterior cladding creating a diverse streetscape
- 10 Year Master Build Guarantee
- 25 minutes to Christchurch city centre
- Architecturally designed with low-maintenance, long lasting materials
- Master-planned community where everything's considered
- Playground and greenspaces for family fun
- Garaging, 1-2 spaces with every home
- Local schools within walking distance





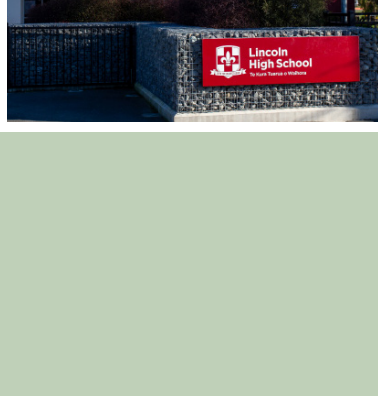
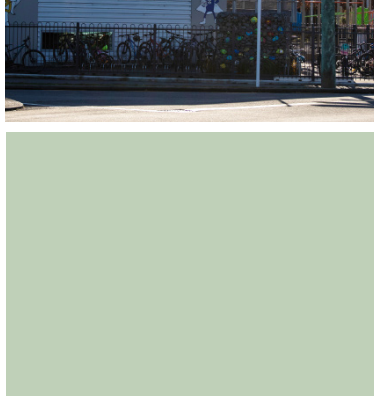
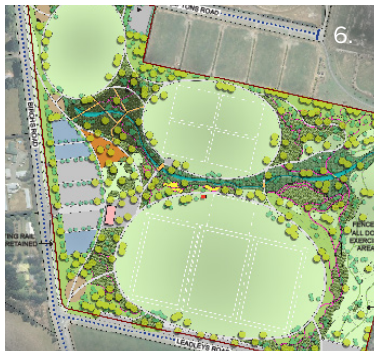


KEY FEATURES

1. Lincoln Golf Club
2. Lincoln Wetlands
3. Local bars and cafes
4. The Laboratory and Apollo cinema
5. Lincoln Event Centre

KEY FEATURES

6. New recreation park
7. Lincoln Library
8. Lincoln Primary School
9. Lincoln High School
10. Lincoln University



Masterplan

- 4 Bedroom
- 3 Bedroom
- 2 Bedroom





Showhome
80 Benashet Drive

Add your touches. Bring your style.

We've chosen modern, neutral colours – giving you the freedom to add your personal touch.



Home features

Throughout the Greenstead development we've used a variety of cladding materials, roof pitches and designs to create a range of unique homes. Our homes come with the landscaping complete, including some native varieties throughout the development.

- Digital door lock
- Heat pump
- Landscaping
- Timber decking or patios
- Garage carpet
- Fenced sections
- Internal access garages
- Fisher & Paykel appliances
- Meet or exceed Healthy Homes Standards i.e. warm, dry, well-insulated.
- Ultra low emission logburners or ducted heat pump systems in some homes
- Stage 3 homes built to the new H1 building code





Stylish design

Our experienced design team has meticulously selected the colours and materials for each home, creating a distinct and unique style that sets our homes apart.

With a diverse range of options to choose from, you're sure to find the perfect home that aligns with your individual preferences. Explore our selection of homes and see for yourself how we've created spaces that are both beautiful and functional.



FAQ

CAN I BUY AN INVESTMENT PROPERTY?

Yes, you can. Homes at Greenstead are very low-maintenance and provide an attractive option for tenants looking to enjoy an easy lifestyle. We have independent rental assessments available now - talk to one of our New Home Consultants for more information.

ARE THESE HOMES FREEHOLD TITLE?

Yes, all homes are on individual freehold titles with no Body Corporate.

WHAT ARE THE RATES?

Rates will not be confirmed until the homes are completed. Selwyn District Council's estimation is available here; www.selwyn.govt.nz/services/rates

WHEN ARE HOMES DUE FOR COMPLETION?

Many homes have already been completed with code and title, and more are underway. There will be a total of around 212 homes at Greenstead.

WHAT GUARANTEES DO YOU OFFER?

We offer a 10 Year Master Build Guarantee on these homes, as well as the assurance of being backed by Fletcher Building, one of NZ's largest companies.

DO YOU HAVE RENTAL APPRAISALS AVAILABLE?

Yes, our New Home Consultants can provide you with copies of this information.

WHICH SCHOOLS ARE IN ZONE?

Greenstead is in zone for schools such as Lincoln Primary and Lincoln High School and many more. Search on <https://www.educationcounts.govt.nz/> for a full list.

DO HOMES INCLUDE GARAGES?

All homes in Stage 1, 2 and 3 include either a single or double internal access garage, many with additional off-street parking.

DO HOMES MEET THE HEALTHY HOMES STANDARDS?

Yes, all homes meet the recent standards for ensuring anyone living here will have a warm, dry and healthy home.

FLETCHER LIVING HAVE A PROVEN HISTORY OF DELIVERING HIGH QUALITY HOMES IN CANTERBURY.



Mataī Springs - Selling now

Located in popular Halswell, Mataī Springs is a tranquil location where ancient Mataī trees once stood. With a central wetland and a range of homes both complete and underway, there's a home for all kinds of living.



One Central - Selling now

One Central is our largest development in Christchurch, with over 450 homes already sold or currently under construction. We are proud to be creating a vibrant community in the heart of the city.



Fletcher Living Canterbury offers a range of homes to suit your lifestyle. Whether you're looking for your first home, a modern central city apartment, or a bit more space to house a growing family, we've got the home for you.



The Fletcher Living Advantage

MORE TIME FOR YOU

Built with care and attention to detail.

Our homes are low-maintenance, easy to care for and come with modern appliances from trusted brands.

We'll even complete the landscaping for you, so you can spend less time working on your home and more time on the things you enjoy.

PEACE OF MIND

We sell brand new finished homes.

Because these homes are sold on completion, you can walk through them to experience firsthand the quality, workmanship and layout – before you buy. Then know that your home is backed by the strength of the Fletcher Living team and the assurance of a 10 Year Master Build Guarantee*. There's nothing like being the first to own.

* Applies to stand-alone, terrace and duplex homes.

MODERN AND COMFORTABLE HOMES

Feel at home the moment you walk through the door.

Packed full of quality features and modern appliances, our light-filled homes provide a welcoming sense of space. Double-glazed, well-insulated, warm and dry, we pride ourselves on creating comfortable, healthy homes that New Zealanders love to live in.

DESIGNS INSPIRED BY LIFE

We design for modern living.

Our architecturally designed homes vary from compact, urban apartments to spacious family homes, reflecting the unique needs of our buyers.

We consider how homes are lived in and create layouts that are versatile and adaptable. On-trend interior colours and finishes provide a blank canvas for you to add your own unique style.

A COMMUNITY YOU'LL BE PROUD OF

We carefully choose locations with access to amenities and services.

We're passionate about creating neighbourhoods that have a classic Kiwi identity and strong sense of community. We achieve this by incorporating the right balance of walkways, parks and playgrounds as well as considering access to the wider amenities that support our neighbourhoods like transport, schools and shopping.

BUY WITH CONFIDENCE

A team of experts, here to help.

Our New Home Consultants are knowledgeable experts who will walk you through our sales process, keeping you well informed along the way. Behind each home is a highly experienced team who has been involved from design through to your handover. We've been trusted homebuilders in New Zealand since 1909 so when we say we're here for you, we mean it.

Details of the development and information contained in this brochure is provided for guidance only as it has been prepared prior to completion of construction. The developer reserves the right to make changes to the information contained in this brochure, without notice, including but not limited to specifications (including size and layout); details; fittings and finishes and pricing. The internal area of each home is measured from the external face of the external walls. Photography and artists impressions depicting the development, the surrounding environment and views are not actual images or photographs of the development but are intended as a guide only. While every reasonable effort has been made to ensure that the information contained in this brochure correctly illustrates the development proposed at the time of creation, no responsibility will be taken for any differences on completion of the development, or for inaccuracies, errors or omissions. This brochure contains selective information, and prospective purchasers should seek independent advice and verification and not rely solely on the information provided in this brochure to make a purchase decision. The information contained in this brochure does not form part of any contract.