

# Matai Springs

Halswell



**Fletcher Living®**  
this is living





---

# Made for you

---

**Mataī Springs is a tranquil location in Halswell where ancient Mataī trees once stood.**

Surrounded by local open green spaces, wetlands and streams, this is the perfect place for families to grow and explore. Walk the old Halswell Quarry, Creamery Ponds or even cycle to the nearby Port Hills.

Start afresh or invest for the future in this development that's perfectly sized for modern living. You'll feel right at home in your new home at Mataī Springs, the moment you step foot in the door.

## Highlights

Designed by Krush Architecture, this master-planned community offers buyers of all ages and stages options to match their lifestyle.

These light filled 2, 3, and 4 bedroom homes are all about modern living with superb flows and family-friendly features.

Interiors feature stylish kitchens, fitted out with the latest tapware, whiteware and cabinetry. Modern touches are everywhere from ensuites to bedrooms with built-in or walk-in wardrobes.

## Features

As you'd expect from Fletcher Living, each home is built to the Healthy Home Standards – so they are warm, dry and comfortable. Plus, each home has its own unique touches with widely varied exterior design and interior layouts using an extensive range of high quality materials and landscaping to create a sense of individuality.

Those exteriors make for easy maintenance, too – leaving you more time to enjoy your new neighbourhood.

- Healthy Homes Standards – warm and dry
- Wide range of exterior cladding creating a diverse streetscape

- 10 Year Master Build Guarantee
- 15 minutes to the city centre
- Architecturally designed with low-maintenance, long lasting materials
- Master-planned community where everything's considered
- Playground nearby and greenspaces for family fun
- Garaging, 1-2 spaces with every standalone home
- Local schools within walking distance
- Short drive to the city and shops





# It's all here

**Halswell charms residents with its perfect blend of suburban tranquility and urban convenience.**

Now an established community, Mataī Springs is a thriving development offering picturesque landscapes, open spaces like Halswell Quarry, and amenities abound with local shops, cafés and recreational facilities. With easy access to the CBD, Halswell is an ideal choice for those seeking a balanced lifestyle of rural charm and city convenience.

1.



## LOCAL FEATURES

1. Te Hāpua: Halswell Centre
2. Creamery Ponds
3. Halswell Quarry
4. New World
5. The Landing, Wigram

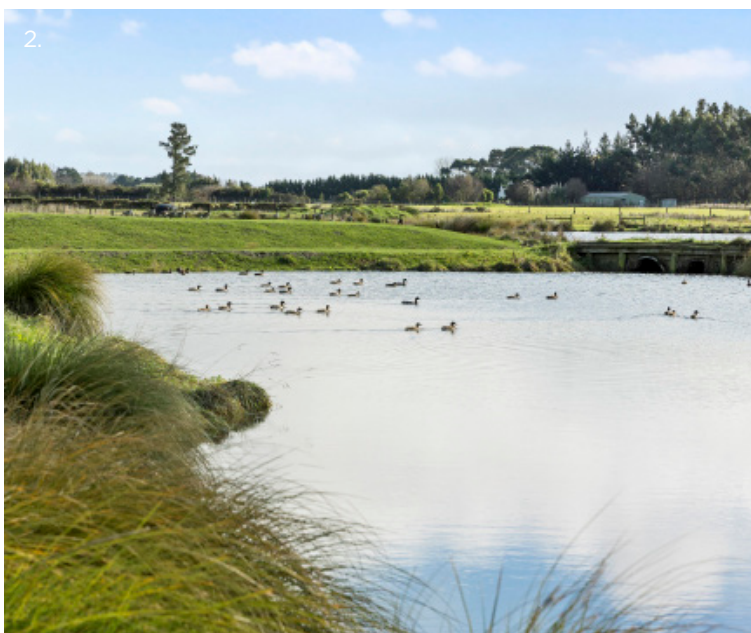
3.



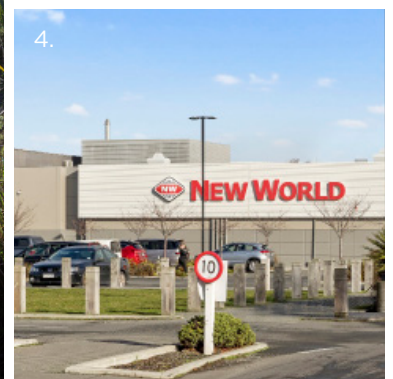
## LOCAL FEATURES

6. Halswell Swimming Pool
7. Halswell Domain
8. The Old Vicarage
9. Kindercare Learning Centre

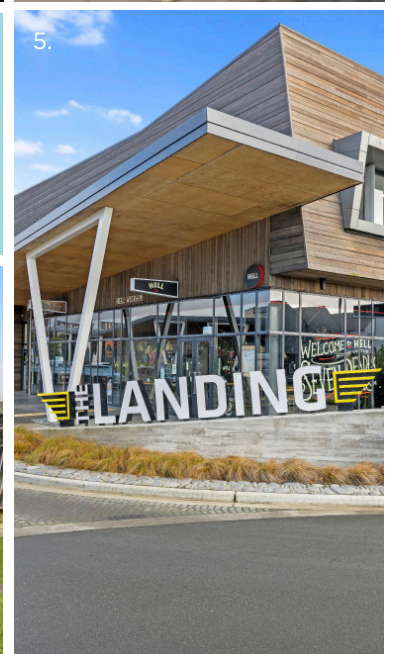
2.



4.



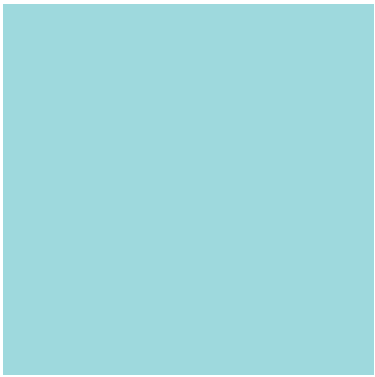
5.



6.



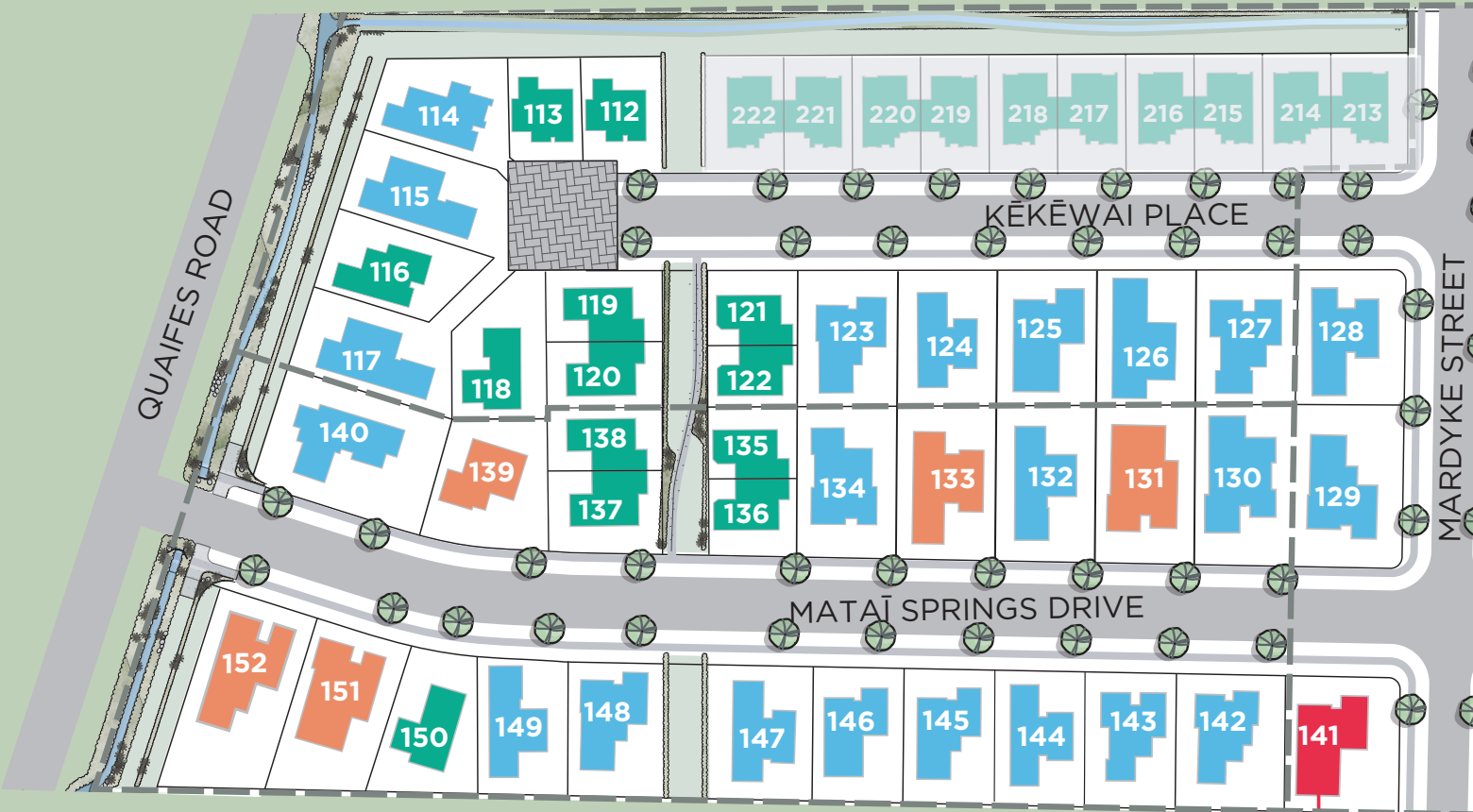




Masterplan

- 2 Bedroom
- 3 Bedroom
- 4 Bedroom

Stage 3



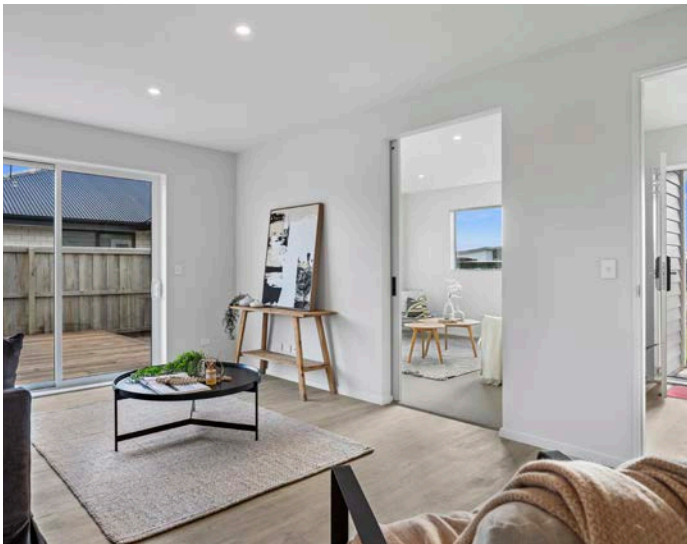
Showhome  
24 Matak Springs Drive





# Add your touches. Bring your style.

We've chosen modern, neutral colours – giving you the freedom to add your personal touch.



## Home features

Throughout the Matai Springs development we've used a variety of cladding materials, roof pitches and designs to create a range of unique homes. Our homes all come with the landscaping complete, including some native varieties throughout the development.

- Digital door lock
- Heat pump
- Landscaping
- Timber decking or concrete patios
- Double glazing
- Garage carpet
- Internal access garages in standalone homes
- F&P stainless steel appliances
- Meet or exceed Healthy Homes Standards i.e. warm, dry, well-insulated.
- Ducted heat pump in some homes







## Stylish design

Our experienced design team has meticulously selected the colours and materials for each home, creating a distinct and unique style that sets our homes apart. With a diverse range of options to choose from, you're sure to find the perfect home that aligns with your individual preferences. Explore our selection of homes and see for yourself how we've created spaces that are both beautiful and functional.



## FAQ

---

### CAN I BUY AN INVESTMENT PROPERTY?

Yes, you can. Homes at Matai Springs are very low-maintenance and provide an attractive option for tenants looking to enjoy an easy lifestyle. We have independent rental assessments available now - talk to one of our New Home Consultants for more information.

### ARE THESE HOMES FREEHOLD TITLE?

Yes, our standalone and terrace homes are on individual freehold titles with no Body Corporate.

### WHAT ARE THE RATES?

Rates are not confirmed at this stage. Christchurch City Council's estimation is available here; [ccc.govt.nz/services/rates-and-valuations/this-years-rates/](http://ccc.govt.nz/services/rates-and-valuations/this-years-rates/)

### DO HOMES INCLUDE LANDSCAPING?

Our homes include driveways, lawns, paths, decks (where applicable) and planting.

### WHAT GUARANTEES DO YOU OFFER?

We offer a 10 Year Master Build Guarantee on these homes, as well as the assurance of being backed by Fletcher Building, one of NZ's largest companies.

### DO YOU HAVE RENTAL APPRAISALS AVAILABLE?

Yes, our New Home Consultants can provide you with copies of this information.

### DO HOMES INCLUDE WINDOW FURNISHING?

Window furnishing is not included, however we work with a range of companies that will be able to assist with installing these once settlement is complete.

### WHICH SCHOOLS ARE IN ZONE?

Matai Springs is nearby schools such as Seven Oaks and Knights Stream School. Search on: [www.educationcounts.govt.nz/](http://www.educationcounts.govt.nz/) for a full list of in zone schools.

### DO HOMES INCLUDE GARAGES?

Yes, all stage 3 homes at Matai Springs come with either a single or double garage, many with additional street parking.

### DO HOMES MEET THE HEALTHY HOMES STANDARDS?

Yes, all homes meet the recent standards for ensuring anyone living here will have a warm, dry and healthy home.

---

## FLETCHER LIVING HAVE A PROVEN HISTORY OF DELIVERING HIGH QUALITY, AWARD WINNING HOMES IN CANTERBURY.



### Greenstead

Located in Lincoln, Greenstead gives you the best of lifestyle living. With 2, 3 and 4 bedroom homes available, this location offers the ideal blend of tranquility and convenience.



### One Central

One Central is our largest development in Christchurch, with over 450 homes already sold or currently under construction. We are proud to be creating a vibrant community in the heart of the city.



Fletcher Living Canterbury offers a range of homes to suit your lifestyle. Whether you're looking for your first home, a modern central city apartment, or a bit more space to house a growing family, we've got the home for you.





# The Fletcher Living Advantage

## MORE TIME FOR YOU

**Built with care and attention to detail.**

Our homes are low-maintenance, easy to care for and come with modern appliances from trusted brands.

We'll even complete the landscaping for you, so you can spend less time working on your home and more time on the things you enjoy.

## MODERN, COMFORTABLE HOMES

**Feel at home the moment you walk through the door.**

Packed full of quality features and modern appliances, our light-filled homes provide a welcoming sense of space. Double-glazed, well-insulated, warm and dry, we pride ourselves on creating comfortable, healthy homes that New Zealanders love to live in.

## DESIGNS INSPIRED BY LIFE

**We design for modern living.**

Our architecturally designed homes vary from compact, urban apartments to spacious family homes, reflecting the unique needs of our buyers.

We consider how homes are lived in and create layouts that are versatile and adaptable. On-trend interior colours and finishes provide a blank canvas for you to add your own unique style.

## A COMMUNITY YOU'LL BE PROUD OF

**We carefully choose locations with access to amenities and services.**

We're passionate about creating neighbourhoods that have a classic Kiwi identity and strong sense of community. We achieve this by incorporating the right balance of walkways, parks and playgrounds as well as considering access to the wider amenities that support our neighbourhoods like transport, schools and shopping.

## BUY WITH CONFIDENCE

**A team of experts, here to help.**

Our New Home Consultants are knowledgeable experts who will walk you through our sales process, keeping you well informed along the way. Behind each home is a highly experienced team who has been involved from design through to your handover. We've been trusted homebuilders in New Zealand since 1909 so when we say we're here for you, we mean it.

Details of the development and information contained in this brochure is provided for guidance only as it has been prepared prior to completion of construction. The developer reserves the right to make changes to the information contained in this brochure, without notice, including but not limited to specifications (including size and layout); details; fittings and finishes and pricing. The internal area of each home is measured from the external face of the external walls. Photography and artists impressions depicting the development, the surrounding environment and views are not actual images or photographs of the development but are intended as a guide only. While every reasonable effort has been made to ensure that the information contained in this brochure correctly illustrates the development proposed at the time of creation, no responsibility will be taken for any differences on completion of the development, or for inaccuracies, errors or omissions. This brochure contains selective information, and prospective purchasers should seek independent advice and verification and not rely solely on the information provided in this brochure to make a purchase decision. The information contained in this brochure does not form part of any contract.