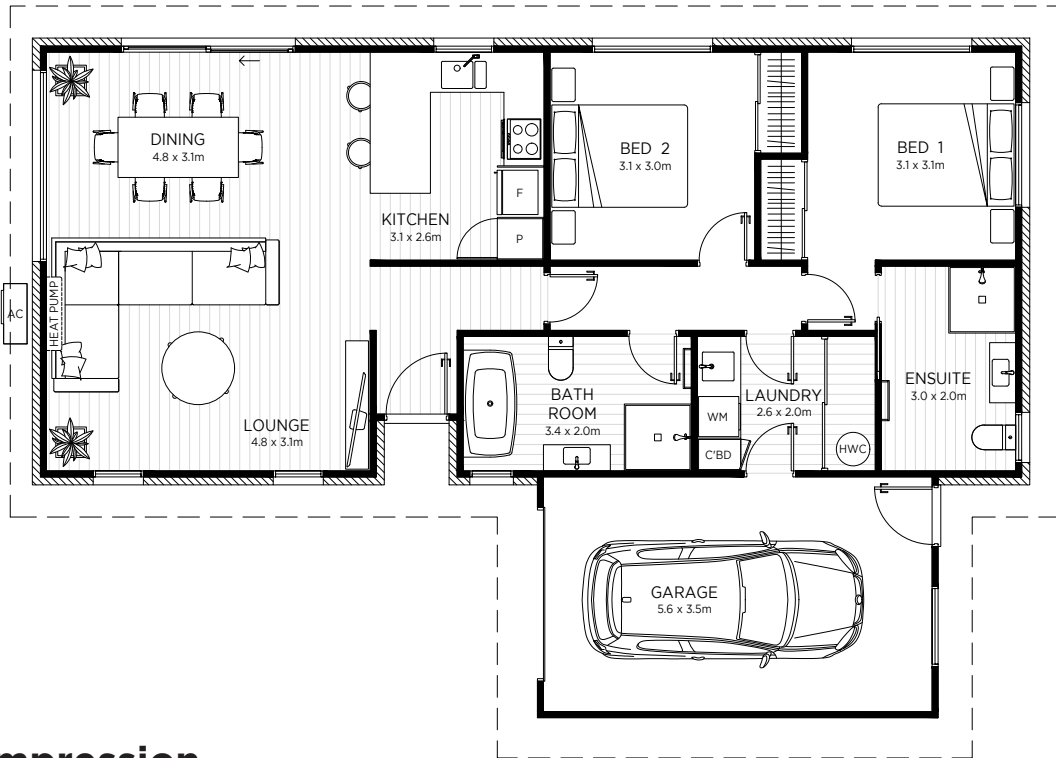


**Floorplan**



**Artists impression**



**Features**

- 2 bedrooms, 2 bathrooms
- Open plan kitchen and living
- Prime Stone bench top
- 10 Year Master Build Guarantee
- Single internal access carpeted garage
- Soft landscaping and fencing
- Fisher & Paykel appliances
- Meets or exceeds Healthy Homes Standards

The specifications, details, and information (including size and layout) set out on this floor plan are indicative only and may be subject to change. The internal area of each home is measured from the external face of the external walls.

## Lot 93

46 Matai Springs Drive, Halswell

## Home Specifications

### Internal

- Two bedrooms, one main bathroom & master with ensuite
- 100% solution dyed nylon carpet
- Vinyl plank flooring
- Modern open plan kitchen, dining and living with Prime Stone bench top
- Fisher & Paykel appliances - 60cm inbuilt oven, dishwasher and rangehood
- Tiled splashback
- Highwall heatpump
- Smoke detectors
- Electric hot water system
- Pre-finished wardrobes including shelving and rails
- Flush panel interior doors
- Heated towel rails and fitted mirrors in bathrooms
- Back-to wall bath
- Carpeted garage

### External

- RibRaft concrete foundation
- Brick exterior with Linea feature cladding
- Double glazed joinery
- Digital front door hardware
- Long run ColorCote roof, gutters, fascia and downpipes
- Timber deck
- Soft landscaping
- Secure boundary fencing
- Sectional garage door with automatic opener and remotes
- TV aerial
- 2 x exterior taps
- Clothesline
- Mailbox

The specifications, details, and information (including size and layout) set out on this floor plan are indicative only and may be subject to change. The internal area of each home is measured from the external face of the external walls.