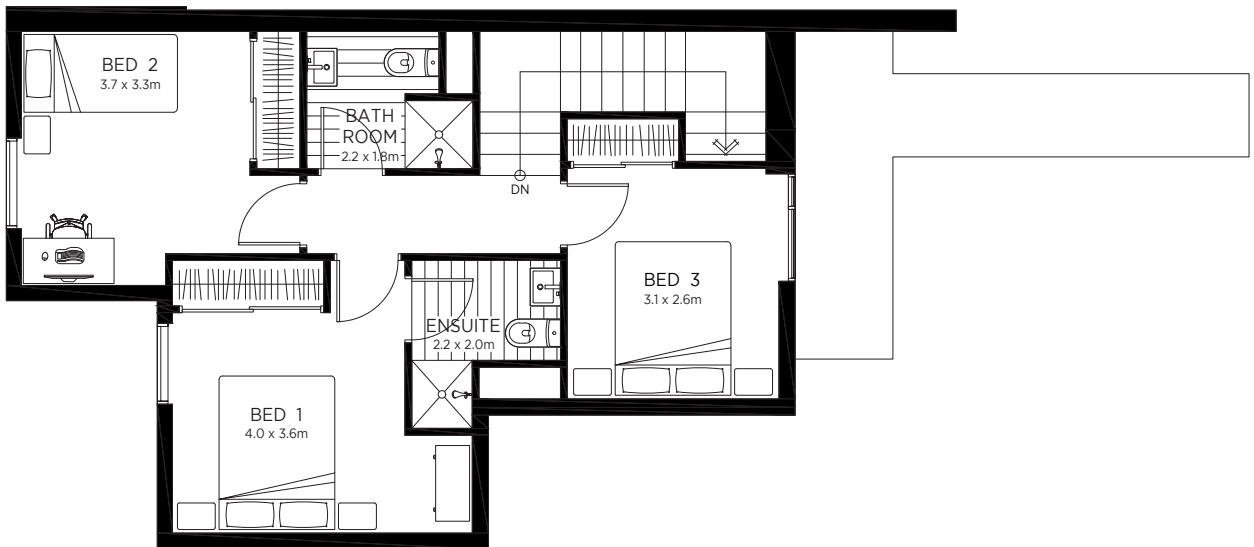
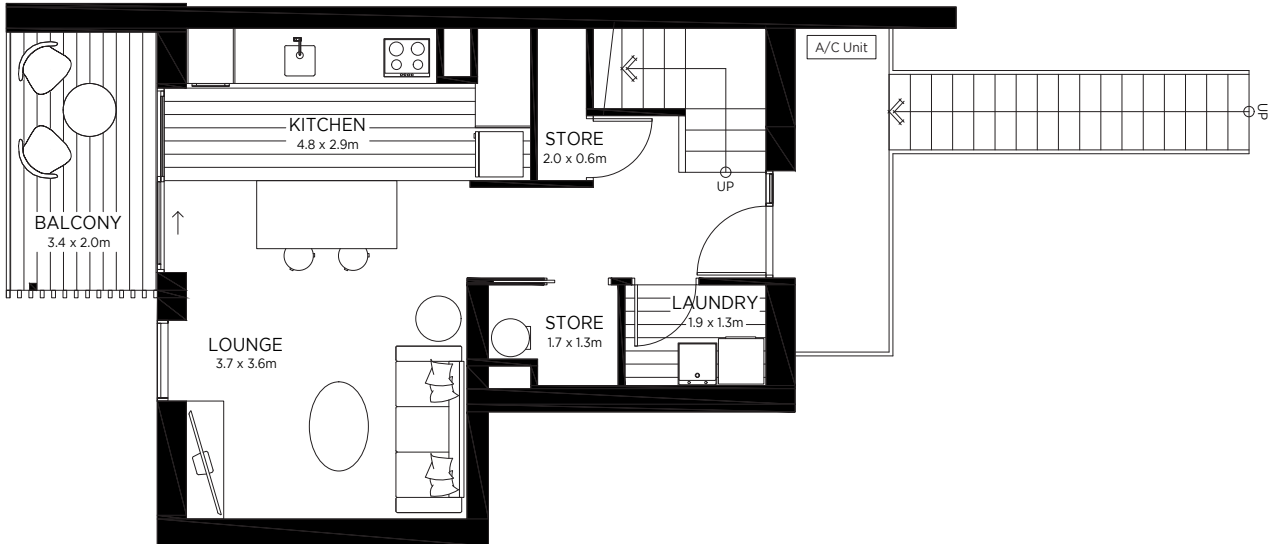


# ONE CENTRAL

BEDFORD  
TERRACES

Terrace Homes  
Unit 84

3 1/2 2 1/2



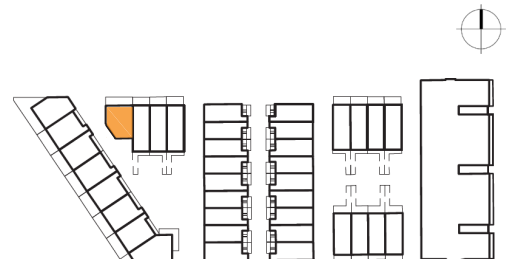
## Details

Interior size - 105m<sup>2</sup>

Exterior size - 12m<sup>2</sup>

Total - 117m<sup>2</sup>

The specifications, details, and information (including size and layout) set out on this floor plan are indicative only and may be subject to change. Internal area is measured from the external edge of the facade to the mid-point of the intertenancy wall. Some units of this plan type are flipped or mirrored.



**Fletcher Living**  
Love your new home