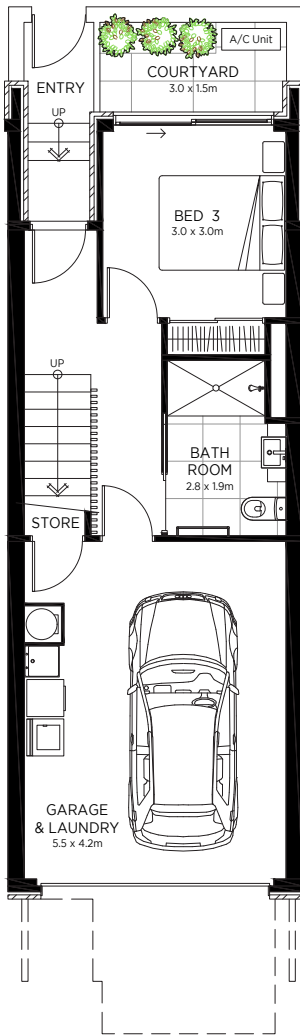
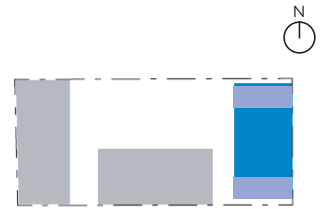
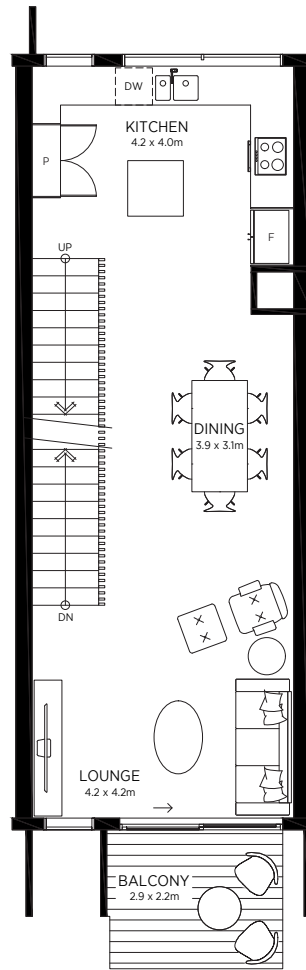


ONE CENTRAL

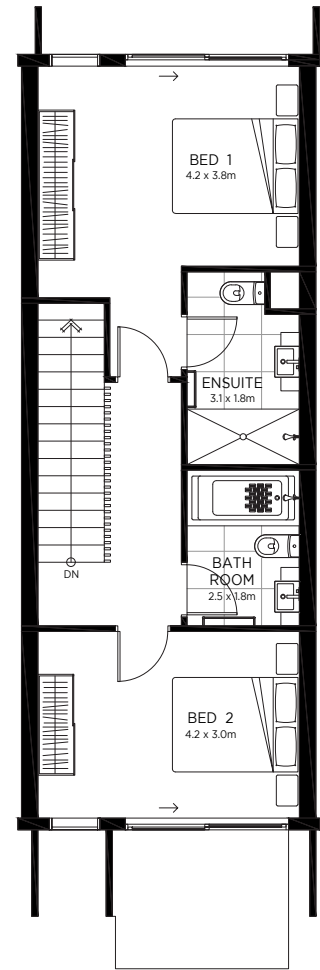
LATIMER TERRACES



Ground floor



First floor



Second floor

15-19/197 Hereford Street

3 3 1-2

House 168m²
Balcony 7m²
Courtyard 7m²

The specifications, details, and information (including size and layout) set out on this floor plan are indicative only and may be subject to change. Internal area is measured from the external edge of the facade to the mid-point of intertenancy wall.

Fletcher Living
Love your new home