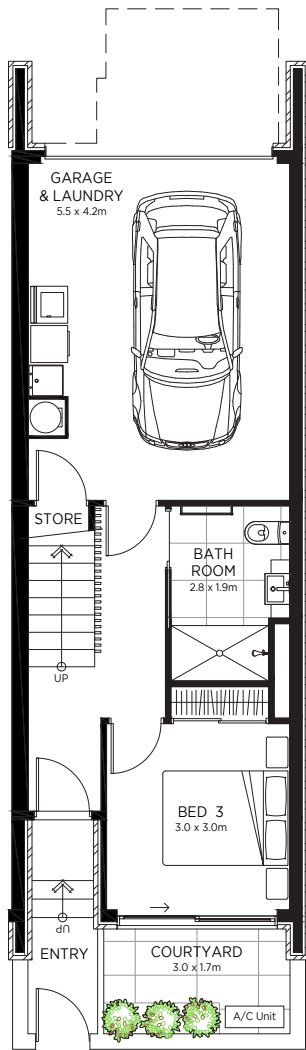
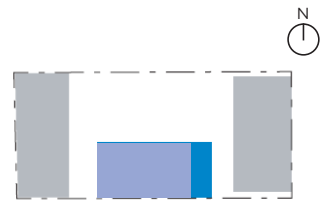
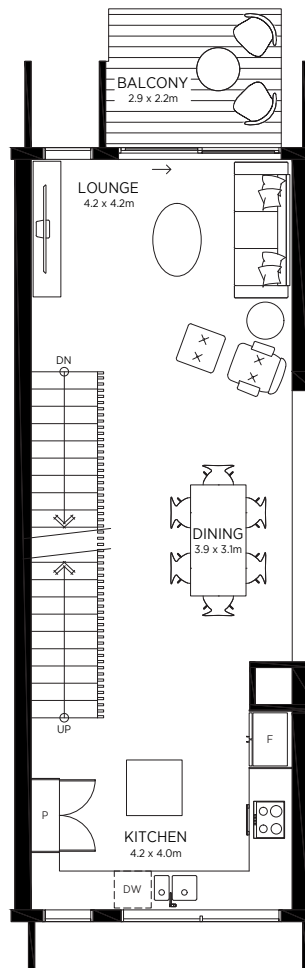


# ONE CENTRAL

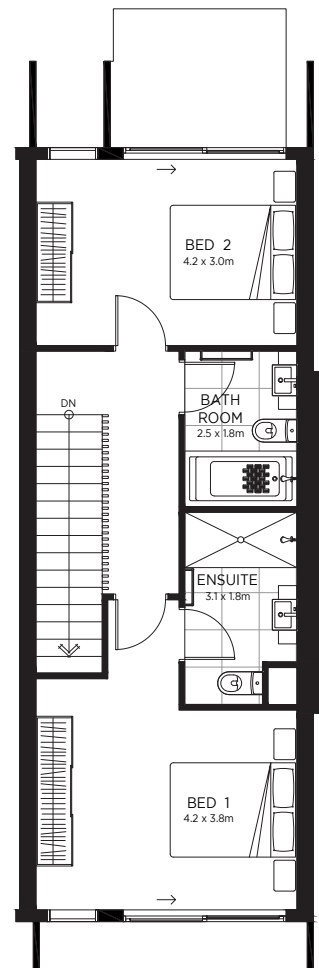
LATIMER TERRACES



Ground floor



First floor



Second floor

13/197 Hereford Street



House 173m<sup>2</sup>  
Balcony 7m<sup>2</sup>  
Courtyard 56m<sup>2</sup>

The specifications, details, and information (including size and layout) set out on this floor plan are indicative only and may be subject to change. Internal area is measured from the external edge of the facade to the mid-point of intertenancy wall.

**Fletcher Living**  
Love your new home