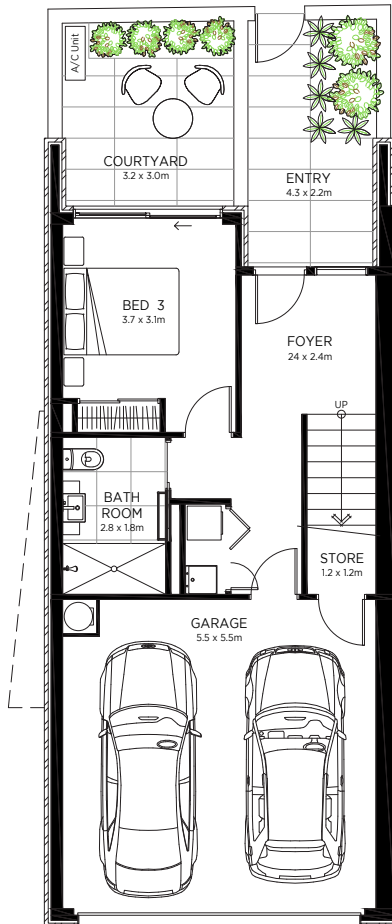
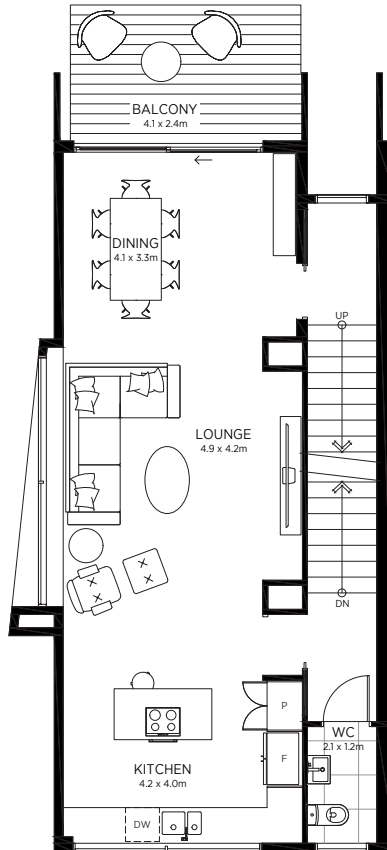


# ONE CENTRAL

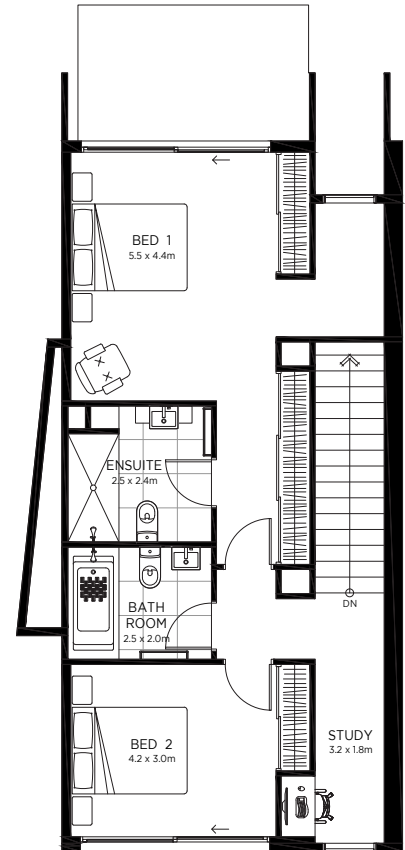
LATIMER  
TERRACES



Ground floor



First floor



Second floor

6/197 Hereford Street



House 219m<sup>2</sup>

Balcony 9m<sup>2</sup>

Courtyard 16m<sup>2</sup>

The specifications, details, and information (including size and layout) set out on this floor plan are indicative only and may be subject to change. Internal area is measured from the external edge of the facade to the mid-point of intertenancy wall.

**Fletcher Living**  
Love your new home