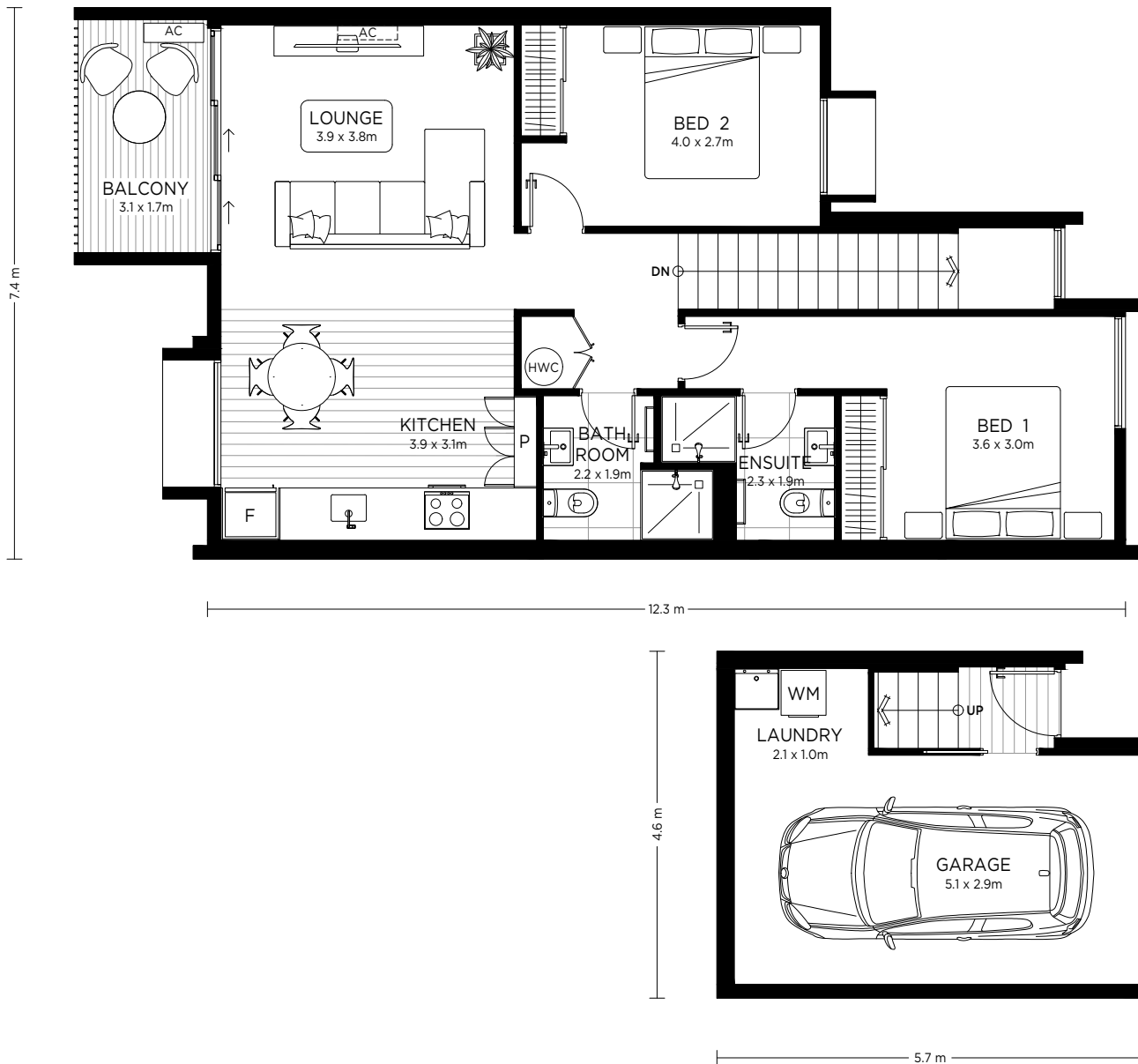


ONE CENTRAL

WORCESTER
TERRACES

PU42, 44, 46 - First floor

2  2  1 



Details

Interior size - 102m²

Balcony - 6m²

Total - 108m²

Fletcher Living
Love your new home

The specifications, details, and information (including size and layout) set out on this floor plan are indicative only and may be subject to change. Internal area is measured from the external edge of the facade to the mid-point of the intertenancy wall.