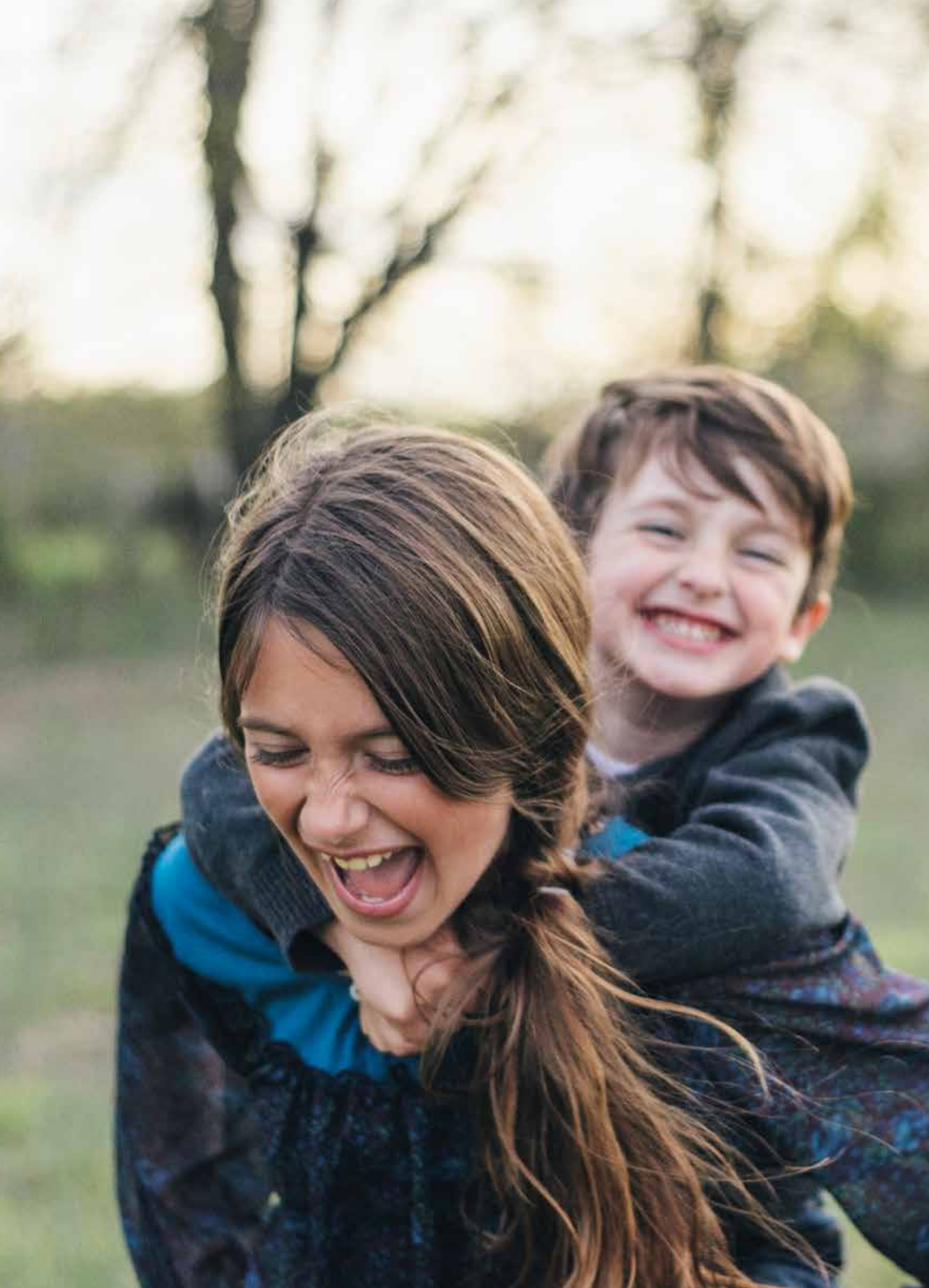




Fletcher Living

Whenuapai

City Fringe | Rural Living



Fletcher Living

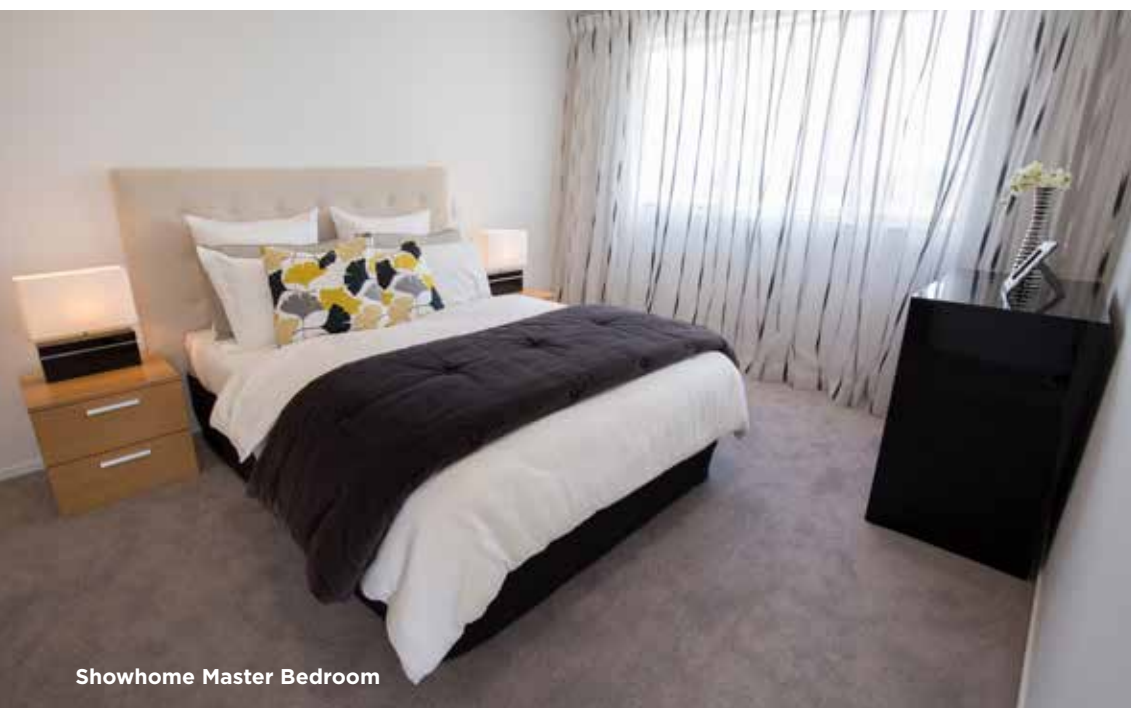
Introducing a new residential community
with the best of both worlds in Whenuapai

Room to breathe; Space to play

The rich rural heritage of the surrounding area informs the architecture and interesting streetscapes of Whenuapai. Designed by leading architects, low maintenance cladding materials and traditional roof forms have been utilised as a nod to the practical and robust architecture of the farm. Generous multi-purpose spaces with clean proportions allow flexibility of furniture and function. All of the homes offer a private outdoor entertaining space, flowing seamlessly from the main living area.



Showhome Kitchen



Showhome Master Bedroom



Potentially re-shoot as a dusk shot to vary tone.



Showhome Dining and Living





Ready for you to move in and relax

Simple forms and natural tones

These high quality homes enjoy great levels of natural light, thermal comfort and cross ventilation.

The focus is on light and spacious open plan living, with a clever floorplan that provides four bedrooms, study and separate living areas. It's a flexibility of space that we know growing families need.

The construction is sound and the design - open and versatile. But what about the details?

From the master bedroom complete with an ensuite and walk in wardrobe to the highly specified kitchen with Caesarstone bench top, it has all been taken care of.

An internal access garage with laundry, heat pump and alarm system are features included in all of our homes at Whenuapai.

Five great reasons to live in Whenuapai

1.

Get your garden on

The mature trees in the area and the fruiting trees planted in every backyard mean that you're starting from scratch - with a head start.



Well connected

Tucked away but with infrastructure in place to get you to the city or the shore with ease.

2.



A great community

Cafés with real coffee, excellent schools, fresh fruit and veg - get to know your neighbours and keep it local.

3.

Tangible Tranquillity

Rural air, country shops,
grassy paddocks, no traffic
and meandering country roads.
It's a slower pace of life that
you feel right away.



Imagery considerations:

- Pony club or shots of horses in a paddock.
- Town hall and tennis court on Totara Rd.

Outdoors and seashores

The playground, beautiful
streets and mature trees:
quality public spaces that
encourage you to enjoy the
fresh air. Live it up.

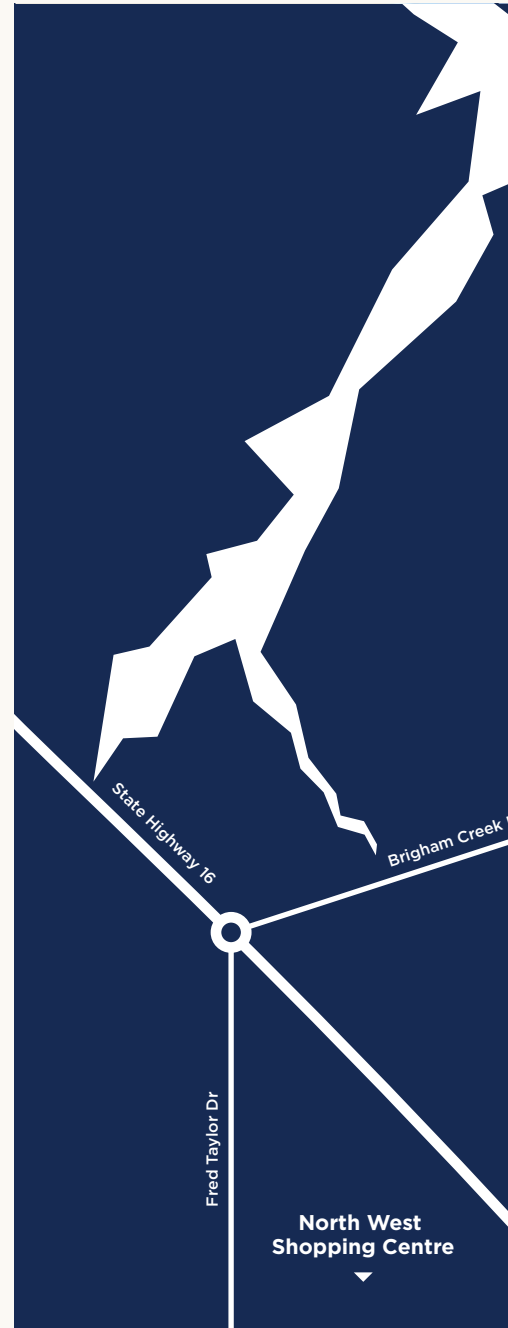
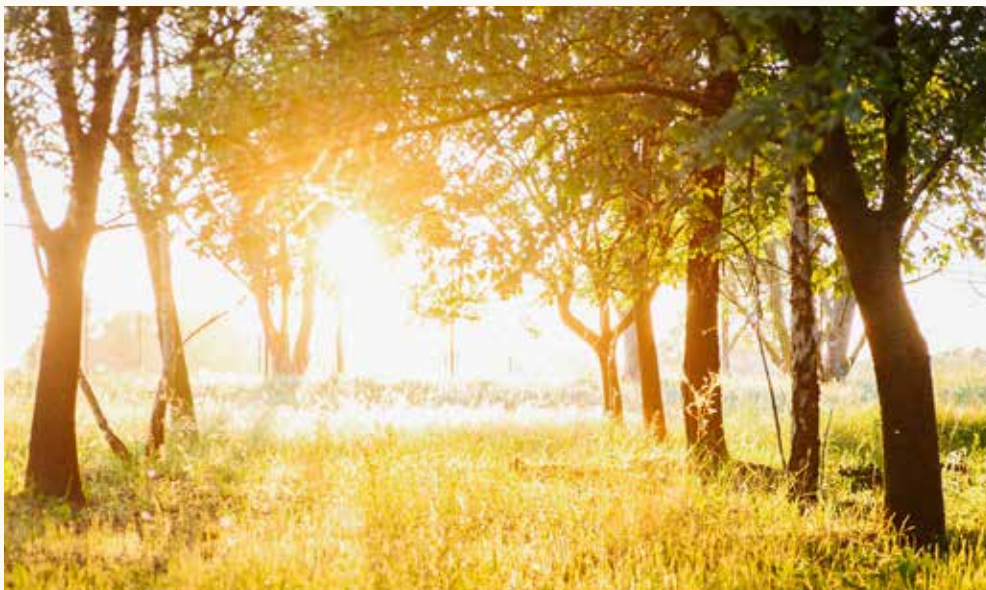


Potentially reshot with kids on the playground





- Wake boarding rails.
- Boat ramp.
- Shot over the water. Maybe Christmas Beach on Herald Island or a shot of the boats from the boat ramp.





Good Land

Whenuapai means good land in Maori, and that's exactly what it is. The surrounding waterways and rural views really make this spot the pick of the bunch. As the area increases in popularity, so too are the schools, transport options and amenities - Northwest shopping centre is just up the road.



City kid with country vibes?

Create a new life for your family in this blossoming area. Easy (double) motorway access, rural views and a tight knit neighbourhood. Meet with friends at the village green for a play and stroll home to enjoy the sunset.

Get the best of both worlds, right now. Our homes are ready to move in to today.

Imagery of the terrace houses shot from across the park.

The Fletcher Living Advantage

Creating desirable communities is the vision that drives Fletcher Living.

EXPERIENCE

We've been building homes in New Zealand for over 100 years - we direct all that experience into creating quality homes that Kiwis love.

NO NEED FOR PROGRESS PAYMENTS

We sell 'completed' homes so there's a deposit on purchase, with a balance on settlement - one of the simplest ways to buy a brand new home.

DETAIL IS KEY

Our homes are built with real care and attention - and you'll find plenty of standard items in our homes that other builders might call 'extras'.

TRUST

We have a trusted reputation for designing and building low maintenance, high quality, reliable homes - ensuring genuine peace of mind for our homeowners. We're also backed by Fletcher Building, one of New Zealand's largest companies.

WE MAKE IT PERSONAL

Our team manages the total construction process to ensure every detail is completed to the highest standard.

QUALITY

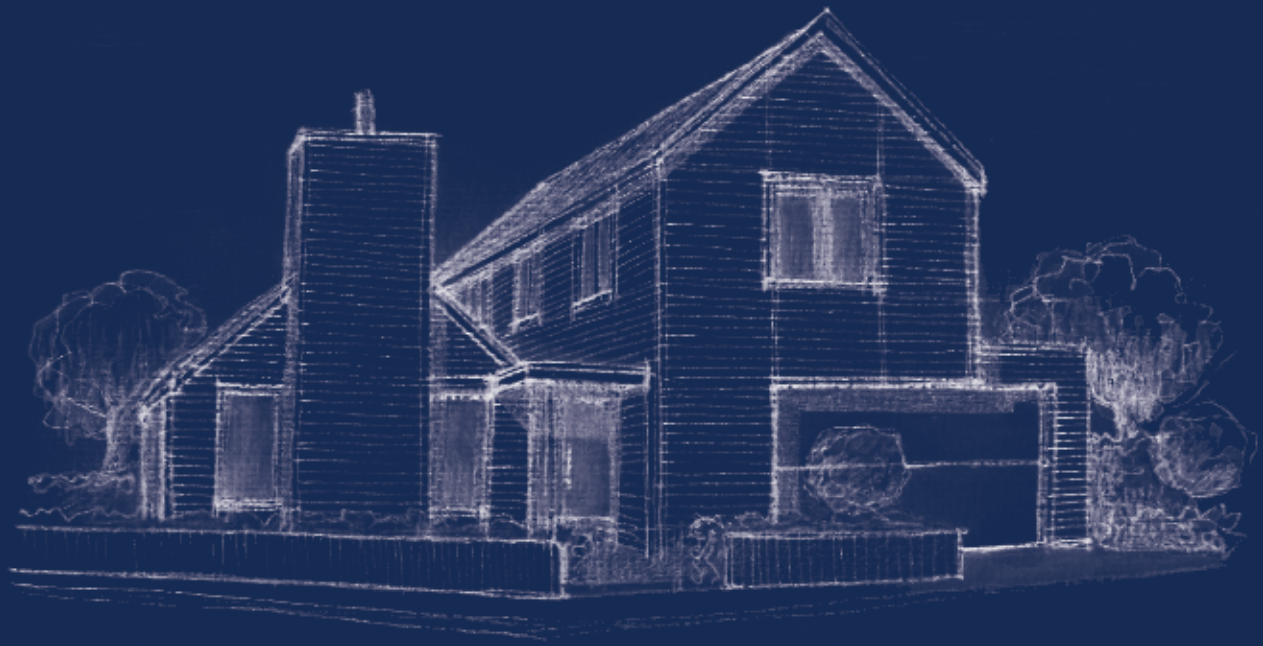
We use high quality, low maintenance, locally sourced materials and top quality fixtures throughout your new home.

10 YEAR GUARANTEE

We're only prepared to sell what we build ourselves and all our homes come with a 10 Year Master Build Guarantee.

SHOWHOMES

Plans and specs for homes can be confusing. We sell finished homes that you can actually walk through and get a real feel for the space, the flow and the look.



Meet the Architects

The idyllic rural setting and fertile land were rich sources of inspiration during the design stage. We carefully selected three outstanding architects that could each contribute distinctively to make an overall simple and elegant new community.

CONTEXT ARCHITECTS

Context is an award-winning architectural practice working both nationally and internationally. The 60-strong team works across all sectors of architecture and are particularly passionate about creating great looking homes, affordable, that are a pleasure to live in. Context have designed some of New Zealand's largest new communities, as well as smaller boutique developments.

JASON BAILEY ARCHITECTS

Jason Bailey specialises in high quality bespoke residential design. Each project is approached as a unique assignment, with specific regard to the client brief and the context of the site. The Jason Bailey team comprises a diverse collective of designers and architects. With an open-plan studio environment that fosters collaboration and interaction.

SHANAHAN ARCHITECTS

Shanahan Architects is a small practice that specialises in residential buildings. A large range of housing types are undertaken and in all cases, the comfort and liveability of their homes are of prime concern. In all of our buildings, we endeavour to create the best living environment possible.

