

Swanson

In the middle
of everywhere.

Fletcher Living

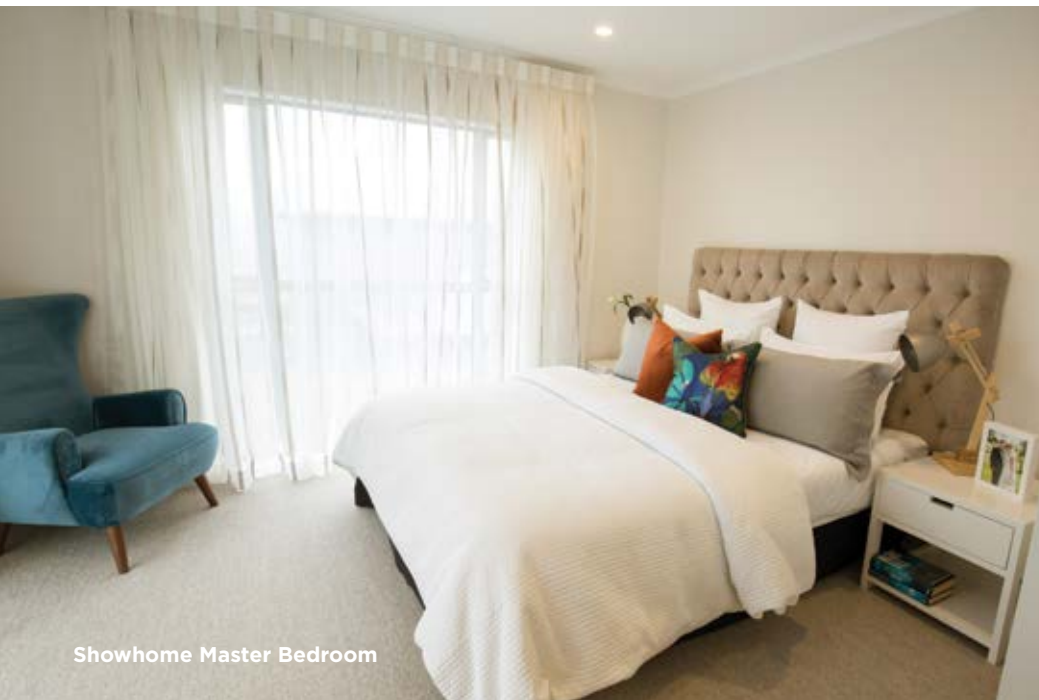
As Auckland
expands, now
is the time to
secure your spot
in the middle of
everywhere.



Fletcher Living

Introducing a new residential community
nestled in the foothills of Swanson.

**See it, love it, buy it.
No auctions, offers or guessing.**





Walk through your brand new home and buy it today.

The elegant, light and open spaces in these homes offer a versatility suitable for all lifestyles. Contemporary habitation is all about the open plan, where kitchen, dining and living happily coexist. It's easy to feel at home and entertain with ease. This is quality living perfect for all ages and stages.



Showhome Dining and Living





Built to last, in a community that's just getting started.

**Everything is done for you, so you
can have your weekends back.**

The construction is sound and the design – open and versatile. But what about the details?

This home is ready for you to move in and relax. From the master bedroom complete with en-suite and walk in wardrobe to the highly specified kitchen with Caesarstone bench top, it has all been taken care of. A high level of quality means a home that is long-lasting and low maintenance.

A place you can put roots down.

The whole family will find a way to play in the beautiful natural surroundings, be it exploring the Waitakere Ranges or catching a wave at Bethells Beach – and a good cup of coffee is only a short walk away. There's a pedestrian link to the Swanson Station, where your electric train will deliver you downtown stress-free.



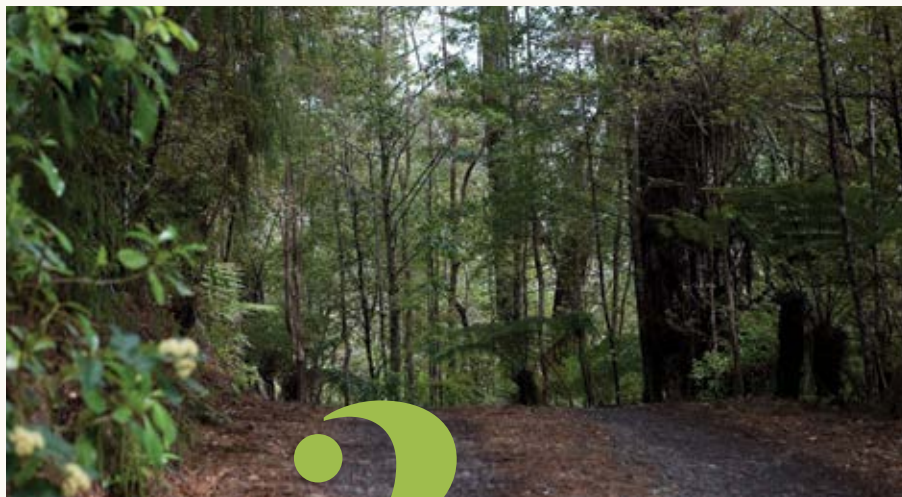


Five great reasons to live in Swanson:

1.

Make Tracks

Living at the foothills of the Waitakere Ranges has its advantages. With over 250 kms of walking tracks and some of the most beautiful sights in the country, there's no excuse not to explore the neighbourhood.



2.

Swanson Village

A vibrant community hub means you're never too far from a good cup of coffee – or schools, healthcare, markets and shopping centres.

Local Markets

Get amongst it at our local monthly market near the train station. Meet the neighbours, have a coffee and take home a bargain.

3.



Well connected

Hear the birdsong, smell the Manuka, then wash the sand off before hopping on an electric train right into the city.



West Coast Beaches

Bethells and O’Neills Beach are the stomping ground for many surfers, holiday makers and locals. With these wild black sand beaches on your doorstep, being pulled in every direction has never felt so good.

A paved road curves through a dense forest. Tall, slender trees with green foliage line the road, and large ferns are visible on the left. The scene is peaceful and natural.

This is a
slower pace
and easier
living.



**Get your weekends back.
Finding something to do is easy,
kicking back and relaxing is even easier.**

Our three and four bedroom stand-alone homes have been fenced and planted; the internal access garage and consideration of storage demonstrate how practicality can complement contemporary designer living.

It's everything you need,
just the way you want it.

The Fletcher Living Advantage

Creating desirable communities is the vision that drives Fletcher Living.

EXPERIENCE

We've been building homes in New Zealand for over 100 years - we direct all that experience into creating quality homes that Kiwis love.

NO NEED FOR PROGRESS PAYMENTS

We sell 'completed' homes so there's a deposit on purchase, with a balance on settlement - one of the simplest ways to buy a brand new home.

DETAIL IS KEY

Our homes are built with real care and attention - and you'll find plenty of standard items in our homes that other builders might call 'extras'.

TRUST

We have a trusted reputation for designing and building low maintenance, high quality, reliable homes - ensuring genuine peace of mind for our homeowners. We're also backed by Fletcher Building, one of New Zealand's largest companies.

WE MAKE IT PERSONAL

Our team manages the total construction process to ensure every detail is completed to the highest standard.

QUALITY

We use high quality, low maintenance, locally sourced materials and top quality fixtures throughout your new home.

10 YEAR GUARANTEE

We're only prepared to sell what we build ourselves and all our homes come with a 10 Year Master Build Guarantee.

SHOWHOMES

Plans and specs for homes can be confusing. We sell finished homes that you can actually walk through and get a real feel for the space, the flow and the look.



