

Hobsonville Point

3 Bedroom Apartments

Selling now!



Featuring open plan dining and designer kitchens, fitted with quality appliances. We have dark and light kitchens available. Pictured is our light wood kitchen.



Hobsonville Point

Hobsonville Point is a thriving and beautiful sanctuary located just 23km from Auckland CBD. A growing and sought-after community on the peninsula, nestled between Albany and West Harbour and surrounded by the waters of Waitemata Harbour. Our homes have been designed by Collingridge and Smith Architects and represent the latest evolution in Fletcher Living homes. Our three bedroom apartments showcase the best in modern living. Situated on the second and third levels, these light filled homes are sure to impress.



Generous open plan living spaces that flow seamlessly out to the sunny balcony. Each home also features a heat pump.

Features



Light and bright bathrooms feature a modern design, full-sized bath and separate shower. Each home has a full family bathroom, plus additional WC on the living level.



These stylish walk up apartments offer the very best of modern living. Featuring open plan living and seamless indoor/outdoor flow to sunny north/west facing decks, perfect for entertaining.



Designed to be warmer, drier, cosier each home has three spacious bedrooms with built in wardrobes and carpeted floors. Plenty of double glazed windows allow for ample natural light throughout the home.

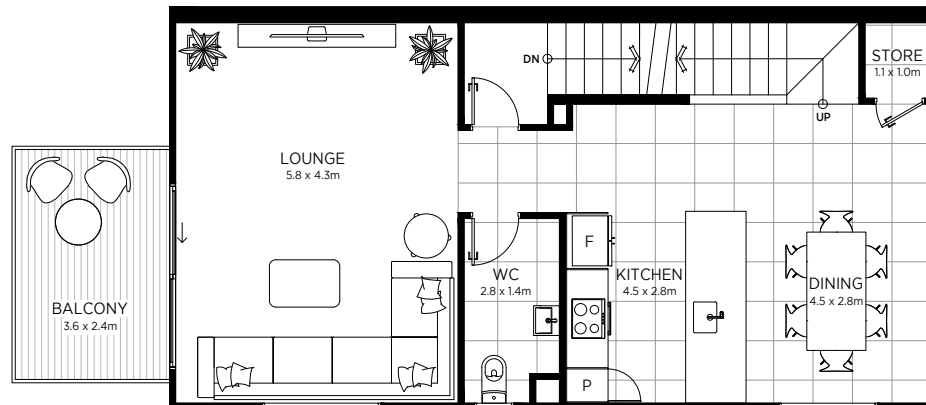


Every home is warm, dry and well insulated. Each home is complete with a heat pump, whilst also meeting the Healthy Homes criteria, meaning they are perfect for any buyer.

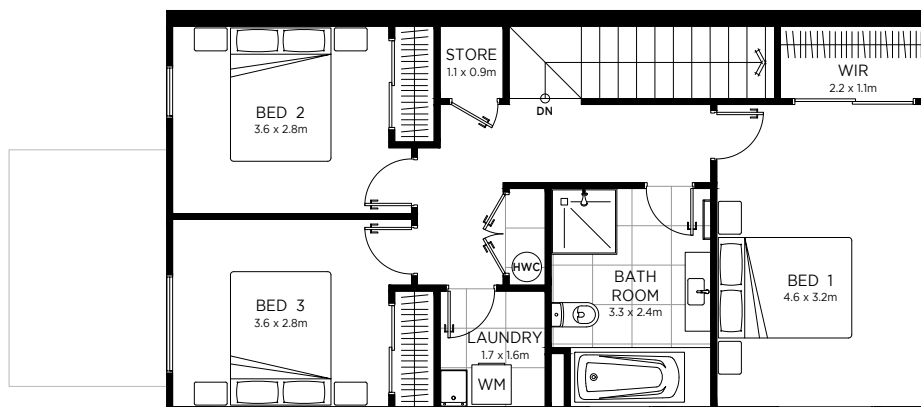
Floorplans

Please note: Every second floorplan is a mirror image.

The specifications, details and information set out on these floor plans are indicative only.



First floor



Second floor

3d plans



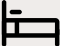



First floor







Second floor

Apartments for sale

Our modern three bedroom apartments are in varying stages of construction and available for purchase now. We have two floorplans to choose from.

END APARTMENT	PRICED AT \$1,099,000
3  1.5  1  1 	Apartment size: 144m ²

MIDDLE APARTMENT	PRICED AT \$1,039,000
3  1.5  1  1 	Apartment size: 143m ²

Contact us



Christina Tubman

ctubman@frl.co.nz
027 334 4752



Susan Annett

sannett@frl.co.nz
027 209 5371



Richard Du
Chinese Speaking
Specialist
rdu@frl.co.nz
027 564 5709

Contact one of our
New Home Consultants
for more information on
these stunning new homes.

Testimonials

**Hear what our customers have to say about living
in their Fletcher Living Apartment!**

"We moved into our Fletcher built apartment in Hobsonville just under 12 months ago and absolutely love it. The spaces are very well designed and you can tell a lot of thought was put into making the apartment a great place to live."

We have found our home to be comfortable, warm and we are very proud of living here. Our neighbours in the other apartments have been great and it's like living in a small community where people look out for each other."

- I. Davis

"The layout is impressive. It is warm and insulated and the build quality is exceptional. I have been living in my new home for over a year, and my friends and family are impressed with the layout and the generous size rooms."

The friendly team at Fletcher Living are always welcoming and knowledgeable about their product. The team has made the process easy for me. I highly recommend Fletcher Living."

- Junior