

Summer 2018

Totara Heights

Surrounded by the lush green forest of Totara Park, the Auckland Botanic Gardens and stunning views of the Manukau Harbour, Totara Heights is suburban living with a rural backdrop.



Surrounded by Nature



Fletcher Living has a trusted reputation and have been building homes for New Zealanders for over 100 years. Totara Heights is our newest development in the Auckland South region. Surrounded by the lush green forest of Totara Park and the beautifully elegant Auckland Botanic Gardens, Totara Heights is suburban living with a country backdrop. We would love to make our development your new home.



Our Homes

On offer in Totara Heights are stand-alone 4 bedroom homes plus spacious 3 & 4 bedroom duplex and terrace homes with private courtyards for you to enjoy. Built to last, our brand new homes are well designed and completed to a high standard of finish with quality appliances, stunning tiled bathrooms and more!

Contact our sales team today for more information regarding available homes and upcoming new releases. We will have options to suit you so don't miss out on this exciting new opportunity to secure a quality built Fletcher Living home in this desirable location.





NEW HOME FOR SALE

Lot 42
92 Matairangi Avenue
\$879,000

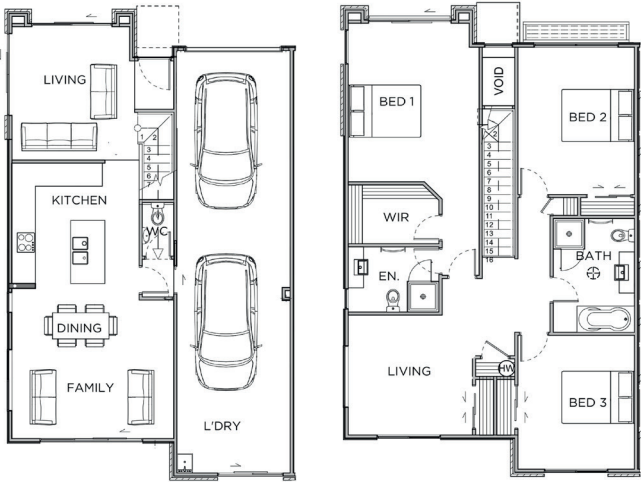
3 2 2

You immediately feel the sense of space as you enter this 207m² fabulous end terrace home. Well-positioned on its 331m² site, this three bedroom terrace home overlooks a peaceful, lush belt of trees and bush, along with sweeping views to the Manukau Heads. An island bench kitchen connects seamlessly to the dining, family area which opens out on to the outdoor patio. An added bonus is the generous lawn space, plenty of room to kick a ball or create that landscaping “piece de resistance”. Upstairs the spacious master bedroom with walk in wardrobe and ensuite offers a restful retreat from the demands of a busy lifestyle.

Home features include:

- 3 bedrooms, 2 living areas & 2 bathrooms
- Tandem 2-car garage
- Quality fixtures and fittings throughout
- Floor to ceiling tiles to bathrooms
- Mechanical ventilation system
- Patio areas
- LED lighting
- Security alarm system
- Fenced rear yard
- Landscaped front and rear yards
- 10 Year Master Build Guarantee

This home will be available for sale from 10am to 4pm, Saturday 17th February 2018 on terms & conditions acceptable to the vendor.



Artist’s impression, minor changes may occur.

Sweeping
views to
the
Manukau
Heads

NEW HOME FOR SALE

Lot 68
15 Matairangi Avenue
\$799,000

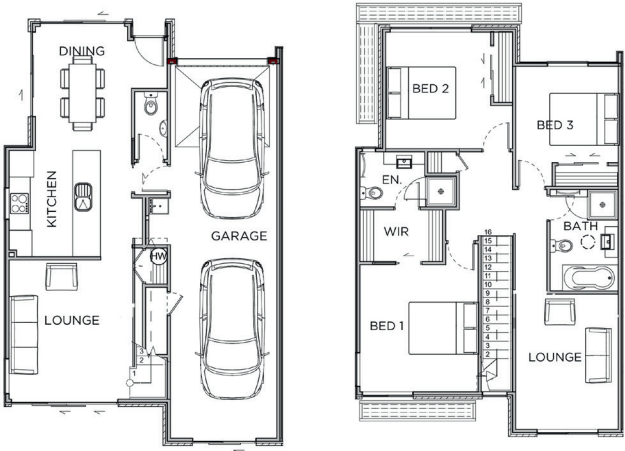
3 2 2

Looking out on to the green leafy bush reserve bordering Totara Park, this 166m² terrace home on a 180m² site, offers easy care living for families. Generous in its distribution of living spaces, this modern day home offers two separate living areas and a well-appointed, open plan kitchen and dining area.

Home features include:

- 3 bedrooms, 2 living areas (one up, one down) & 2 bathrooms
- Tandem 2-car garage
- Quality fixtures and fittings throughout
- Floor to ceiling tiles to bathrooms
- Mechanical ventilation system
- Patio areas
- LED lighting
- Security alarm system
- Fenced rear yard
- Landscaped front and rear yards
- 10 Year Master Build Guarantee

This home will be available for sale from 10am to 4pm, Saturday 24th February 2018 on terms & conditions acceptable to the vendor.



Artist’s impression, minor changes may occur.

Easy care
living for
families

Our Location



Enjoy the convenience of plenty of local amenities within minutes of the development as well as the luxury of having Totara Park and Auckland Botanic Gardens on your doorstep.



The Fletcher Living Advantage

EXPERIENCE

We've been building homes in New Zealand for over 100 years - we direct all that experience into creating quality homes that Kiwis love.

WE'RE OBSESSED WITH DETAIL

Our homes are built with real care and attention - and you'll find plenty of standard items in our homes that other builders might call 'extras'.

10 YEAR GUARANTEE

We're only prepared to sell what we build ourselves and all our homes have a 10 Year Master Build Guarantee.

QUALITY

Our contemporary designs maximise light, space and warmth ensuring our homes are sustainable, energy efficient and long lasting. We choose to work with materials that are of a high quality, proven, low maintenance and that work in harmony

with the environment. We select locally sourced products ensuring consistency of supply and backup options for our homeowners.

TRUST

We have a trusted reputation for quality, reliability and on time delivery - serious peace of mind for our clients, and we're backed by Fletcher Building, one of New Zealand's largest companies.

SHOWHOMES

Plans and specs can be confusing, so we have finished homes you can actually walk through and get a real feel for the space, the flow and the look.

SUPPORT

We're on the ground and open 7 days a week, with our Sales Showrooms open from 10am - 6pm. You'll also find plenty of after sales support, with local teams on hand to help straight away.

Contact our New Home Consultants

ph. 09 950 4562 | totaraheights@frl.co.nz

Visit our showhome

8 Matairangi Avenue
Corner of Eugenia Rise and Calluna Crescent
Open 7 days, 10am-6pm. Closed public holidays



Christine Fowler
027 281 6795
cfowler@frl.co.nz



Leslie Jota
027 406 2971
ljota@frl.co.nz