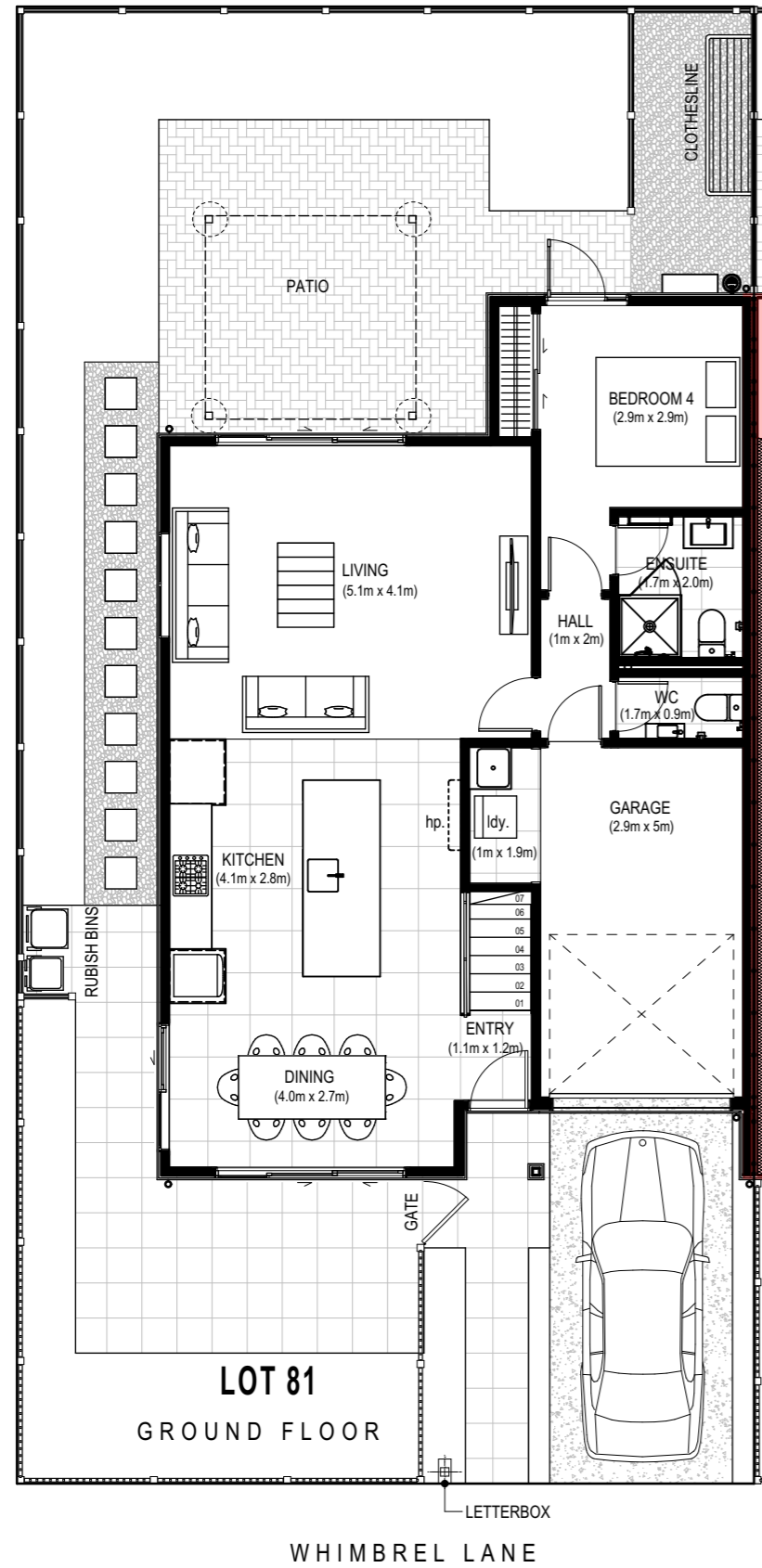
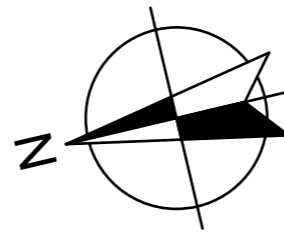


IT WALL EASEMENT
REFER TO TITLE PLAN



LOT 81 - TYPE H1
Whimbrel Lane,
Ormiston Town Centre,
AUCKLAND



SITE AREA = 219.4 m²
TOTAL GROSS FLOOR AREA = 181.2 m²
Ground Floor = 93.9 m²
First Floor = 87.3 m²

FLOOR PLAN

