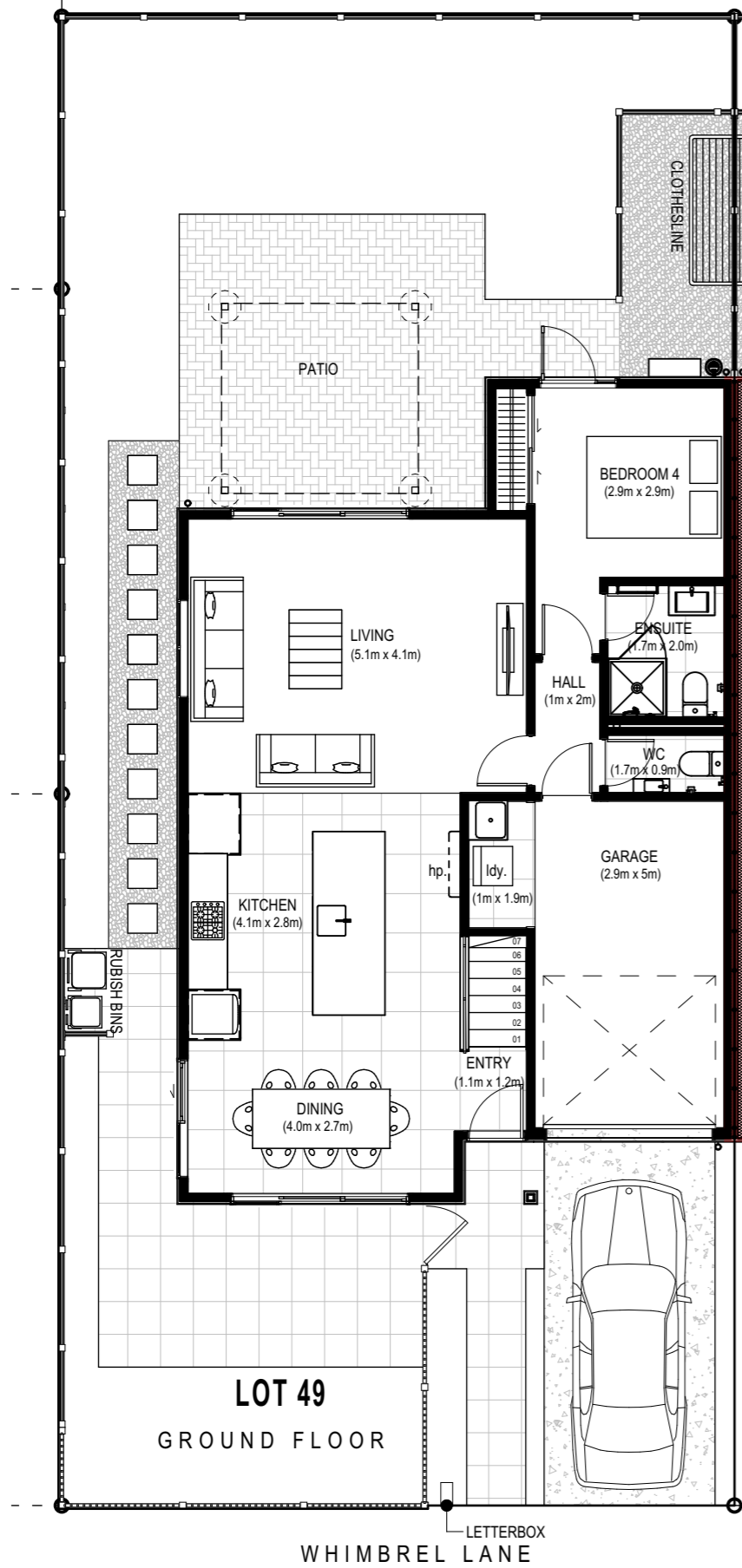
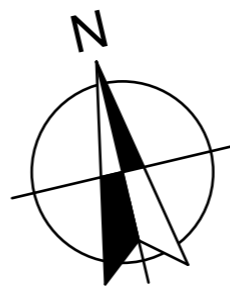


IT WALL EASEMENT
REFER TO TITLE PLAN



LOT 49 - TYPE G3

Whimbrel Lane,
Ormiston Town Centre,
AUCKLAND



SITE AREA = 232.6 m²
TOTAL GROSS FLOOR AREA = 181.2 m²

Ground Floor = 93.9 m²
First Floor = 87.3 m²

FLOOR PLAN

