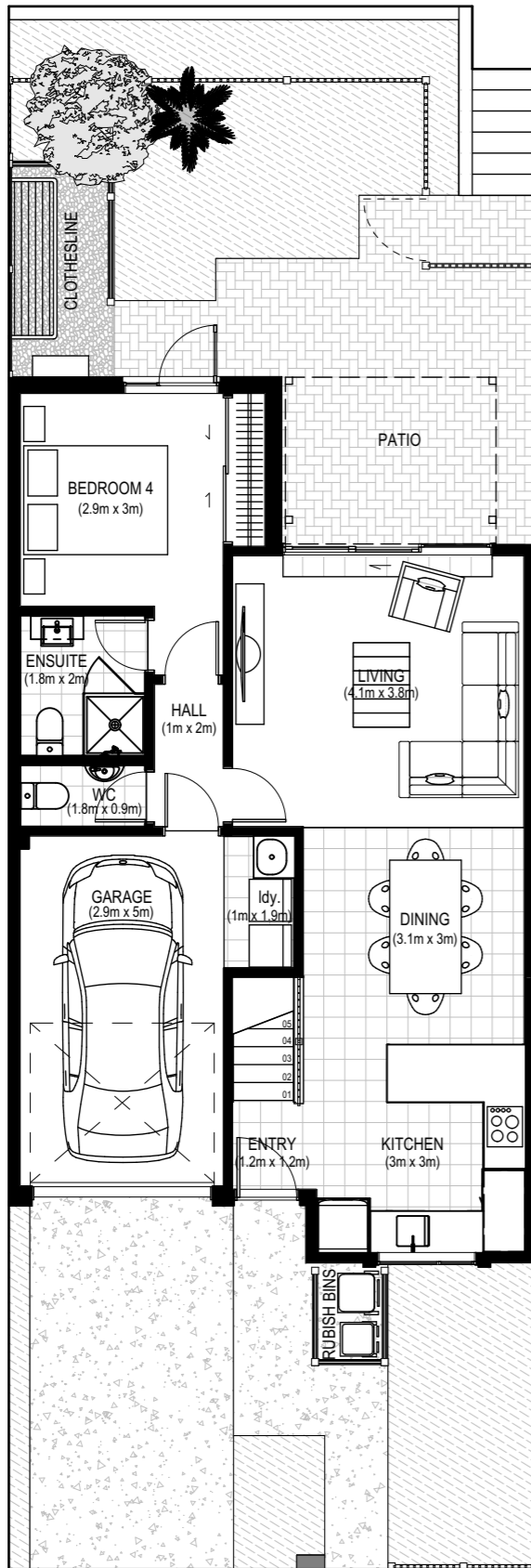


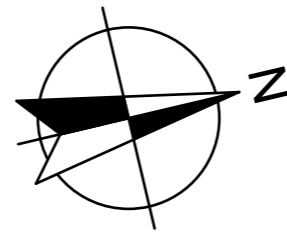
JOHN WALKER PROMENADE



WIMBREL ROAD

LOT 75 - TYPE 2A

Wimbrel Road,
Ormiston Town Centre,
AUCKLAND



SITE AREA = 168 m²
TOTAL FLOOR AREA = 161 m²

Ground Floor = 80 m²
 First Floor = 81 m²
 Gross Floor Area = 167 m²

