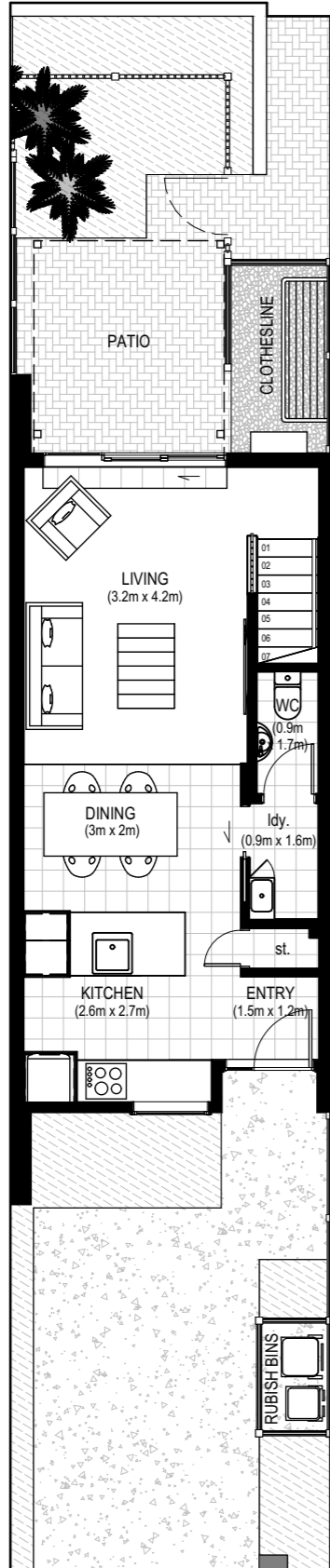


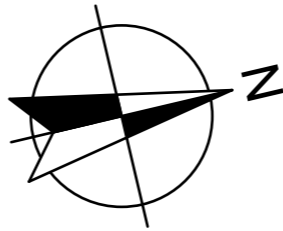
JOHN WALKER PROMENADE



RORIDA LANE

LOT 2 - TYPE 6A

Rorida lane,
Ormiston Town Centre,
AUCKLAND



SITE AREA = 101 m²
TOTAL FLOOR AREA = 81 m²

Ground Floor = 40 m²
First Floor = 41 m²
Gross Floor Area = 84 m²

