

Beachlands

Beachlands is a tranquil coastal suburb nestled on Auckland's Pohutukawa Coast. Enjoy fresh sea air and stunning scenery from its coastal walkways and year round access to the sparkling waters of the Hauraki Gulf.





Pohutukawa Coast Shopping Centre

Opening by May 2017 in the south-eastern end of Beachlands is a newly developed shopping centre which will create more options for Beachlands residents. It is only a short walk or drive from our Fletcher Living Beachlands community!

The Pohutukawa Coast Shopping Centre will have a vast array of new and exciting services and experiences for the community. The plans for the Centre include a Countdown Supermarket, saving locals the 20 minute drive to Botany or Howick.

Also planned is a fitness gym, a barber, a nail salon, well-recognised food brands, a café and a restaurant. As well as these, a new medical centre and pharmacy will also be available for local convenience.



Stage 2 of our Beachlands community

Stage 2 of this stunning Beachlands community offers a variety of cleverly designed, quality built, single-level, 4-5 bedrooms homes being released to the market.

Set on large 800sqm sections there is plenty of room for the kids to run around and enjoy the outdoors. The open-plan family, dining and island-style kitchens in these homes are perfect for entertaining friends,

with seamless indoor-outdoor flow to the patio areas. Plus, there is no better place to relax after a long day with views of the Hauraki Gulf from your living room of some homes.

Our homes are positioned in a quiet community, 5 minutes from the beach and Pine Harbour. Only a short ferry ride away from the city, the coastal lifestyle in Beachlands is the quintessential Kiwi dream.

The Beachlands Maraetai Walkway

Enjoy views to Auckland City, Rangitoto Island and the Coromandel Peninsula on a scenic walk from Beachlands to Maraetai. A perfect weekend activity for people of all ages and fitness levels, the Beachlands-Maraetai walkway is wheelchair accessible, suitable for prams and dog-friendly.

Discover a stunning outlook across the

Pohutukawa coastline, an array of native coastal flora and fauna and significant Maori and European history along the way.

So hop on your bikes, or put on your walking shoes, and take in all that Beachlands and Maraetai have to offer. Don't forget to pack some togs if you wish to take a dip in the many beaches along the way.



NEW HOME FOR SALE

Lot 139
11 Mahutonga Ave
\$1,239,000

4 2 2

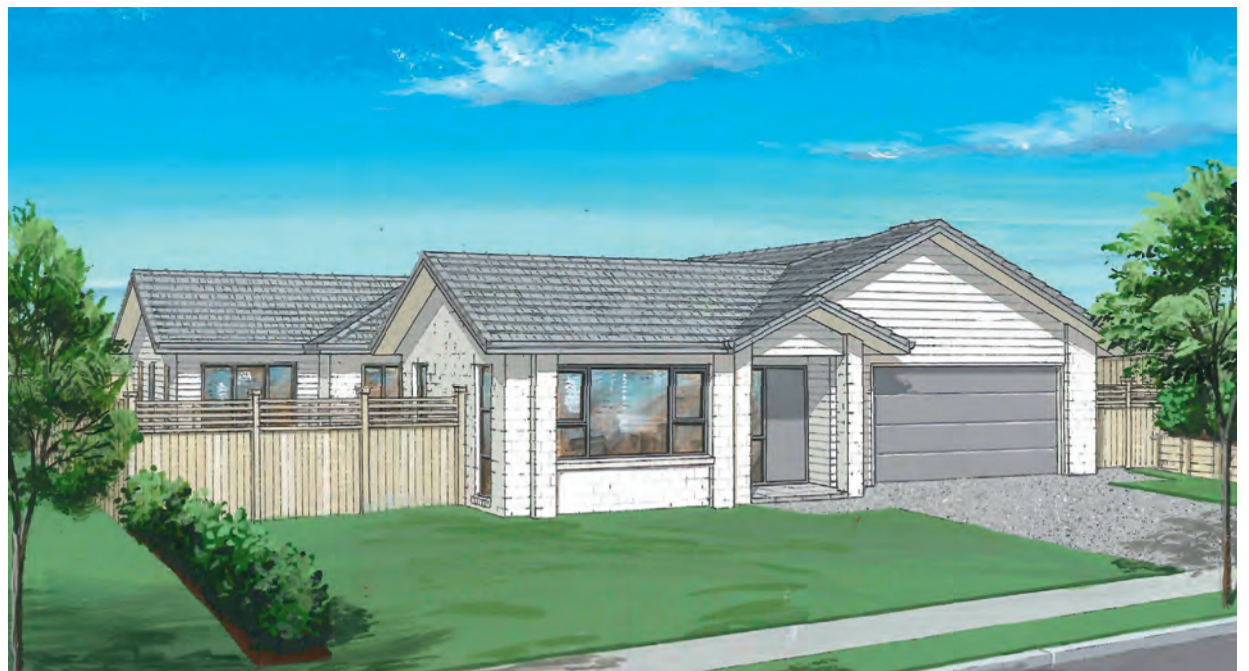
This stunning family home offers 237sqm of easy-care living on an 800sqm north facing site. From the entry you will feel that this home is warm and welcoming and beautifully designed.

Informal living flows perfectly out to the private patio where you can catch the sun, entertain or simply relax. Kids will love the generous grass space, which is fully fenced for peace of mind.

Home features include:

- 2.7m stud height throughout the home
- Separate formal lounge
- Under tile heating to bathroom & kitchen
- A separate laundry
- Quality Fisher & Paykel appliances
- Double glazing to all living areas
- Heat pump
- Central vacuum
- Security system
- Recessed LED lighting
- Wardrobe organizers to bedrooms
- 10 year Master Build Guarantee

Available from Saturday, 29th April 2017, until sold on terms and conditions acceptable to the Vendor.



Artist's impression, minor changes may occur.

Informal living flows perfectly out to the private patio where you can catch the sun, entertain or simply relax.



Artist's impression, minor changes may occur.



Artist's impression, minor changes may occur.

NEW HOME FOR SALE

Lot 120
28 Mahutonga Ave
\$1,249,000

4 2 2

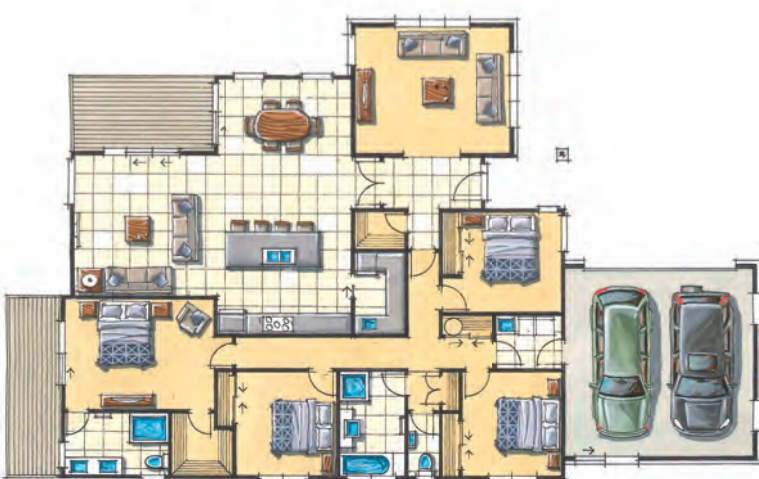
With views from the family area or master bedroom of the city lights at night, this 235sqm home on an 800sqm site will delight.

The cleverly designed home combined with the intricate detail give this home the X factor. Sun soaked and sophisticated, this home offers the perfect setting for entertaining friends, or relaxing with family.

Home features include:

- 2.7m stud height throughout the home
- Separate formal lounge
- Under tile heating to bathroom & kitchen
- A separate laundry
- Quality Fisher & Paykel appliances
- Double glazing to all living areas
- Heat pump
- Central vacuum
- Security system
- Recessed LED lighting
- Wardrobe organizers to bedrooms
- 10 year Master Build Guarantee

Available from Saturday, 13th May 2017, until sold on terms and conditions acceptable to the Vendor.



Artist's impression, minor changes may occur.

Views from the family area or master bedroom of the city lights at night.



The Fletcher Living Advantage

Experience

We've been building homes in New Zealand for over 100 years - we direct all that experience into creating quality homes that Kiwis love.

Trust

We have a trusted reputation for quality, reliability and on time delivery - serious peace of mind for our clients, and we're backed by Fletcher Building, one of New Zealand's largest companies.

We're obsessive about the detail

Our homes are built with real care and attention - and you'll find plenty of standard items in our homes that other builders might call 'extras'.

You won't be lumbered with progress payments

We sell completed homes so there's a deposit on purchase, with a balance on settlement - one of the simplest ways to buy a brand new home.

We make it personal

Our team manages the total construction process to ensure every detail is completed to the highest standard.

Quality

We use high quality, low maintenance, locally sourced materials for the best supply and back-up options, so you can be sure of top quality with no delays.

10 Year Guarantee

We're only prepared to sell what we build ourselves and all our homes have a Master Build 10 Year Guarantee.

Showhomes

Plans and specs can be confusing, so we have finished homes you can actually walk through and get a real feel for the space, the flow and the look and feel.

Support

We're on the ground and open 7 days a week, with our Sales Showrooms open from 10am - 6pm. You'll also find plenty of after sales support, with local teams on hand to help straight away.

Fletcher Living Quality homes creating more space for living.

At Fletcher Living we pride ourselves on delivering quality, well-designed homes for our customers.

Fletcher Living has recently seen some great feedback from our existing customers. What is clear is that the new residents love our homes and enjoy the level of detail, planning and space these homes offer.

Mr & Mrs Hastings

"We couldn't have designed or built a more beautiful home, it has everything you would dream of plus more, all the homes were so spectacular we knew we couldn't go wrong with Fletchers'. The team are so warm & genuine, available to us at all hours through the easy process, truly accommodating."

Mr & Mrs Godfrey

"We highly recommend Fletcher homes, the suppliers and contractors have been fantastic and easy to deal with. We love our new home and are highly satisfied with the quality and finishes. A special thanks to Jan who made the buying process very easy for us."

Fletcher Living Beachlands

Beachlands is a safe anchorage from the rush of the busy week and offers desirable living for today's modern family. Close to good schools, areas of work, shopping and many recreational activities, this offers residents of Beachlands great flexibility, large quality homes and an excellent lifestyle.

Fletcher Living Beachlands

Call Jan on 951 3149 or
Ann on 979 7160
Email: beachlands@frl.co.nz
Showhome: 10 Kibblewhite Ave

fletcherliving.co.nz

Exit the southern motorway at the East Tamaki Road off-ramp and turn left. Continue on East Tamaki Road, turn right onto Preston Road then left onto Ormiston Road. Follow the signs to Whitford and continue on Whitford-Maraetai Road. Turn left onto Jack Lachlan Drive toward Formosa then right onto Kibblewhite Avenue to our showhome.

